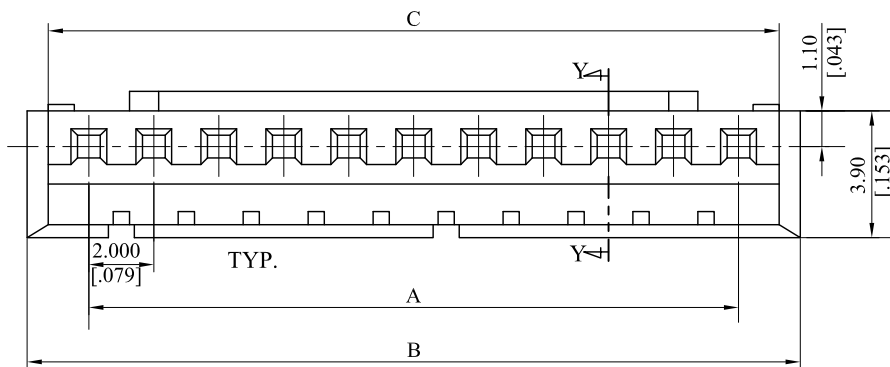


RoHS COMPLIANT

CUSTOMER DRAWING

REV.	ECO. NO.	DESCRIPTION	DATE
A	DWG. REL.	APPROVED	
B	ES031018		
C	ES081001		
D	ES210803	C-5 Add Dimension 3.50±0.20	Aimee



Material : Nylon 6/6 UL 94V-0

Ordering Information:

2010S**000*
1 2

1.No.of circuits:2~20P

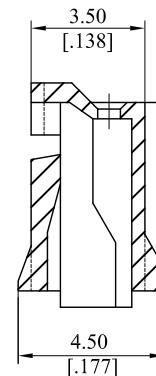
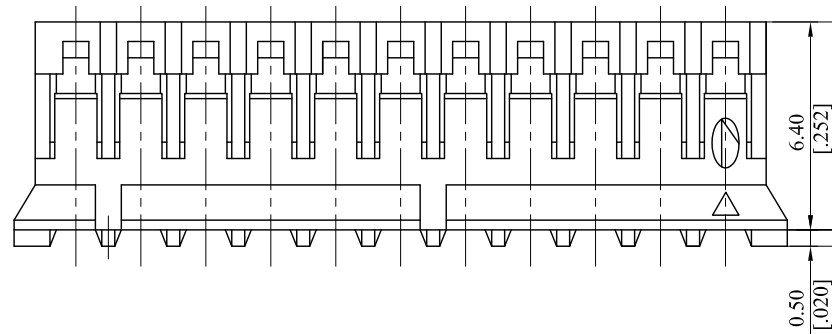
2.Base color option:

0=White 1=Black 3=Red 7=Blue

A=2.000mm(.079")*No.of spaces

B=A+3.8mm(.150")

C=A+2.5mm(.098")



SECTION Y-Y

TOLERANCE UNLESS OTHERWISE SPECIFIED			LEOCO CORPORATION					
mm			http://www.leoco.com.tw					
[inch]	mm	inch	APPROVED BY:	DATE:	TITLE:			
1 PLACE	± 0.30	± ---	Chard	2021.08.05	2.00mm Housing			
2 PLACES	± 0.20	± .012	Checked BY:	DATE:				
3 PLACES	± 0.10	± .008	Angel	2021.08.05	PART NO.: 2010S**000*			
4 PLACES	± ---	± .004	Aimee	2021.08.05				
ANGULAR ±1°			SIZE: A3	SCALE: 1:1		DRAWING NO.: 201002S	REV.: D	SHEET: 1 OF 1