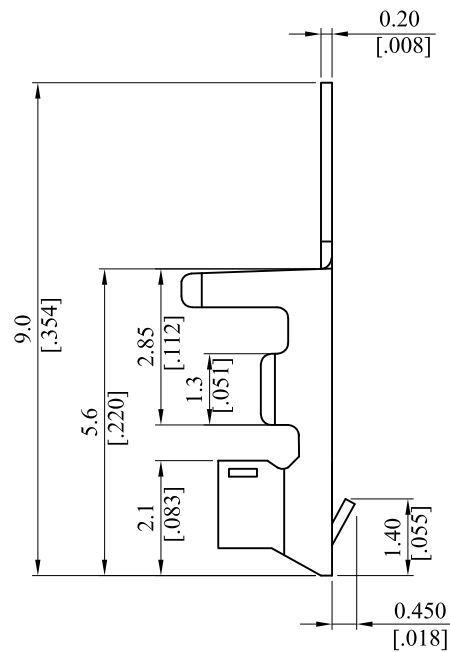
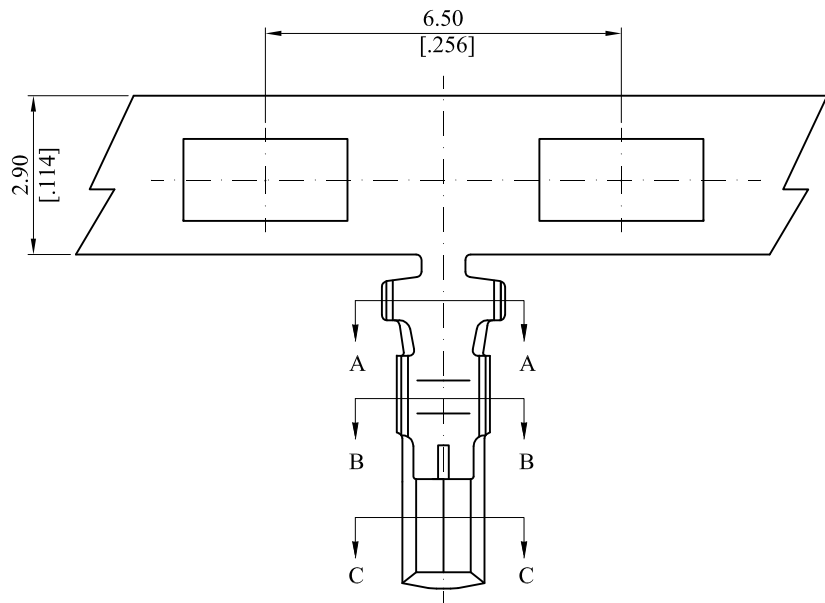


RoHS COMPLIANT

CUSTOMER DRAWING			
REV.	ECO. NO.	DESCRIPTION	DATE
B	ES140701	UPDATE	
C	ES170106	ADD WIRE RANGE	2017.1.9



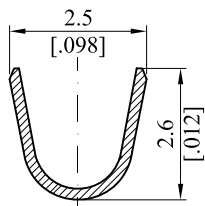
Note:

Material: Phosphor Bronze  
Wire Range: AWG 22~30

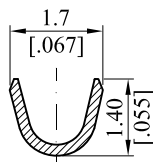
Ordering Information:  
2033TPB \*\* 00  
1

1.Plating:

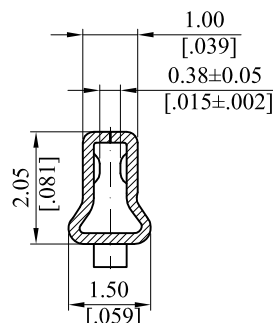
00=Tin plated 120μ" min. over 30μ" min.  
Nickel underplating overall  
MT=Matte tin plated 80μ" min. over 30μ" min.  
Nickel underplating overall



Section A-A



Section B-B



Section C-C

TOLERANCE UNLESS OTHERWISE SPECIFIED			LEOCO CORPORATION <a href="http://www.leoco.com.tw">http://www.leoco.com.tw</a>		
mm	mm	inch	APPROVED BY:	DATE:	TITLE:
[inch]			Chard	2017.1.9	Crimping Terminal
1 PLACE	± 0.30	± ---	CHECKED BY:	DATE:	
2 PLACES	± 0.20	± .012	Angle	2017.1.9	PART NO.: 2033TPB**00
3 PLACES	± 0.10	± .008	DRAWN BY:	DATE:	
4 PLACES	± ---	± .004	Tess	2017.1.9	DRAWING NO.: 203306S
ANGULAR ±1°			SIZE: A3	SCALE: 1:1	REV.: C
			SHEET: 1 OF 1		