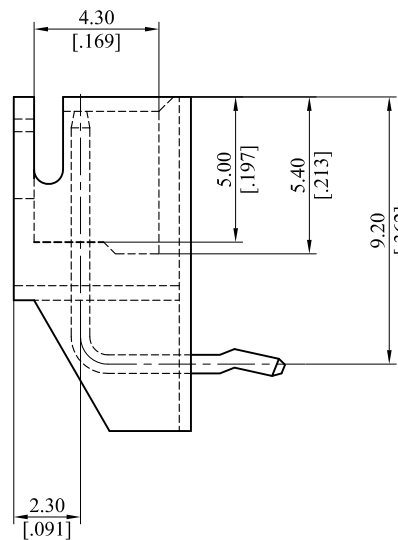
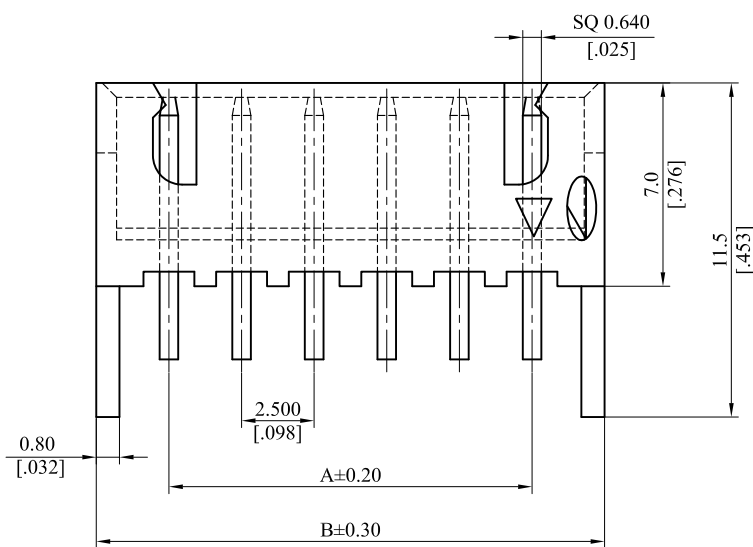
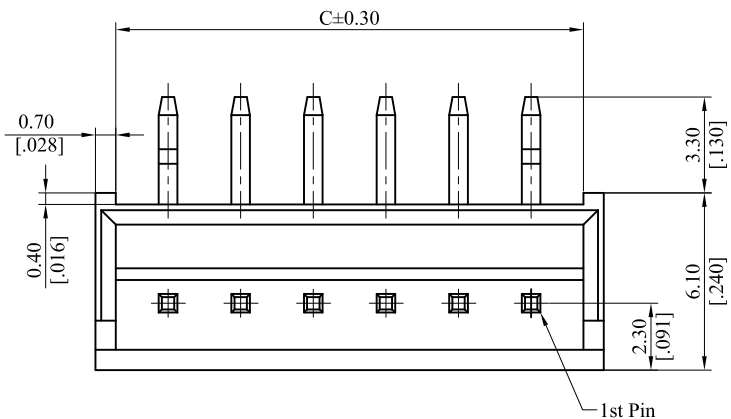


RoHS COMPLIANT

CUSTOMER DRAWING

REV.	ECO. NO.	DESCRIPTION
F	ES160712	ADD FIRST PIN MARK
G	ES180120	Add:color 1 Black
H	ES180805	Change Layout: 00.90 +0.10/-0 → 01.00 +0/-0.10



Note:

Material:
Insulator: Thermoplastic, UL94V-0, White
Contact: Brass

General part number:

$$2521P^{**} H * 0 *$$

$$\quad \quad \quad 1 \quad 2 \quad 3$$

1.No. of circuits(2~16P)

2.Plating

0=Tin plated 120μ" min. over 30μ" min. Nickel underplating overall

3.Color

1=Black 0=White

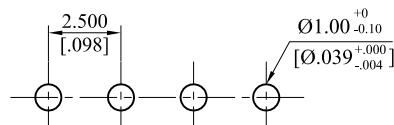
A=2.50(.098")xNo.of spces

B=A+5.00(.197")

C=A+3.60(.142")

Circuits with The position of the kink

circuits	the position of the kink	
2P	1st	2nd
3P	1st	3rd
4P	1st	4th
5P	1st	5th
6P	1st	6th
7P	1st	7th
8P	1st	8th
9P	1st	9th
10P	1st	10th
11P	1st	11st
12P	1st	12nd
13P	1st	13rd
14P	1st	14th
15P	1st	15th
16P	1st	16th



RECOMMENDED P.C.B LAYOUT

TOLERANCE UNLESS OTHERWISE SPECIFIED			LEOCO CORPORATION http://www.leoco.com.tw	
mm [inch]	mm	inch	APPROVED BY:	DATE:
1 PLACE	± 0.30	± ---	Chard	2018.08.08
2 PLACES	± 0.20	± .012	CHECKED BY:	DATE:
3 PLACES	± 0.10	± .008	Angel	2018.08.08
4 PLACES	± ---	± .004	DRAWN BY:	DATE:
ANGULAR ±1°			Shirley	2018.08.08
			SIZE: A3	SCALE: 1:1
			TITLE: 2.50Pitch Wafer	
			PART NO.: 2521P**H*0*	
			DRAWING NO.: 252108S	REV.: H SHEET: 1 OF 1