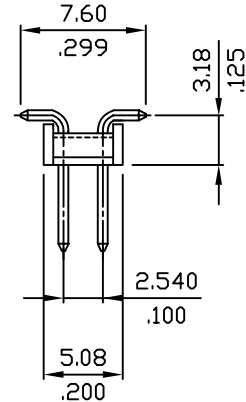
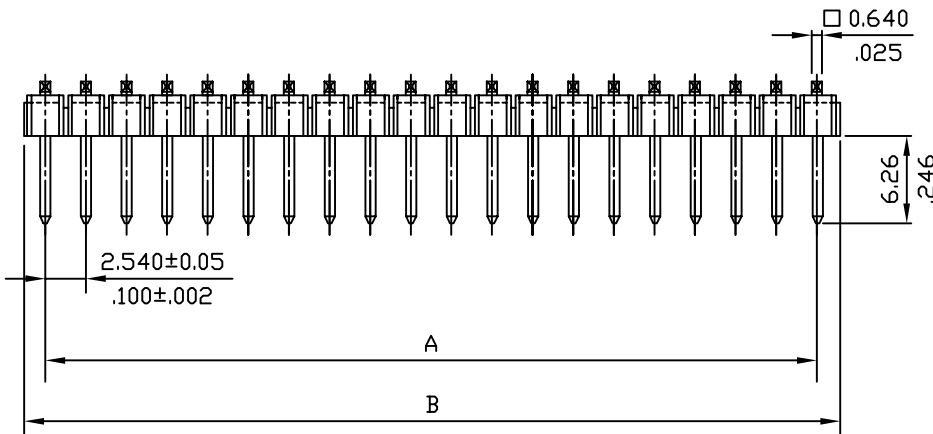
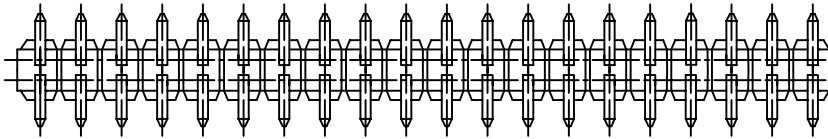


Material:

Insulator: PA6T UL94V-0

Contact: Brass

RoHS COMPLIANT



CIRCUITS	PART NO.	DIMENSION		CIRCUITS	PART NO.	DIMENSION	
		A	B			A	B
04	2558P04M*00	2.540<.100	5.1<.200	42	2558P42M*00	50.800<.200	53.3<.2098
06	2558P06M*00	5.080<.200	7.6<.299	44	2558P44M*00	53.340<.210	55.9<.2201
08	2558P08M*00	7.620<.300	10.2<.402	46	2558P46M*00	55.880<.220	58.4<.2299
10	2558P10M*00	10.160<.400	12.7<.500	48	2558P48M*00	58.420<.230	61.0<.2402
12	2558P12M*00	12.700<.500	15.2<.298	50	2558P50M*00	60.960<.240	63.5<.2500
14	2558P14M*00	15.240<.600	17.8<.701	52	2558P52M*00	63.500<.250	66.0<.2598
16	2558P16M*00	17.780<.700	20.3<.799	54	2558P54M*00	66.040<.260	68.6<.2701
18	2558P18M*00	20.320<.800	22.9<.902	56	2558P56M*00	68.580<.270	71.1<.2799
20	2558P20M*00	22.860<.900	25.4<1.000	58	2558P58M*00	71.120<.280	73.4<.2890
22	2558P22M*00	25.400<1.000	27.9<1.098	60	2558P60M*00	73.660<.290	76.2<.3000
24	2558P24M*00	27.940<1.100	30.5<1.201	62	2558P62M*00	76.200<.300	78.7<.3098
26	2558P26M*00	30.480<1.200	33.0<1.299	64	2558P64M*00	78.740<.310	81.3<.3201
28	2558P28M*00	33.020<1.300	35.6<1.402	66	2558P66M*00	81.280<.320	83.8<.3299
30	2558P30M*00	35.560<1.400	38.1<1.500	68	2558P68M*00	83.820<.330	86.4<.3402
32	2558P32M*00	38.100<1.500	40.6<1.598	70	2558P70M*00	86.360<.340	88.9<.3500
34	2558P34M*00	40.640<1.600	43.2<1.701	72	2558P72M*00	88.900<.350	91.4<.3598
36	2558P36M*00	43.180<1.700	45.7<1.799	74	2558P74M*00	91.440<.360	94.0<.3701
38	2558P38M*00	45.720<1.800	48.3<1.902	76	2558P76M*00	93.980<.370	96.5<.3799
40	2558P40M*00	48.260<1.900	50.8<2.000	78	2558P78M*00	96.520<.380	99.1<.3902
				80	2558P80M*00	99.060<.390	101.6<.4000

				LECO CORPORATION	APPROVED:		PART NO.: 2558P**M*00					
					GENERAL TOLERANCES: (UNLESS SPECIFIED)		DATE:		TITLE: HEADER			
C	ES071009					CHECKED:						
B	ES051213					DATE:		DRAWING NO.: 255832S				
A	DWG REL					DRAWN:						
REV.	ECO. NO.	CHG.	APP.			DATE:		UNITS	SCALE	SIZE	SHEET	REV.
						ANGULAR ± ? 1° ?		mm inch	4:1	A4	1/2	C

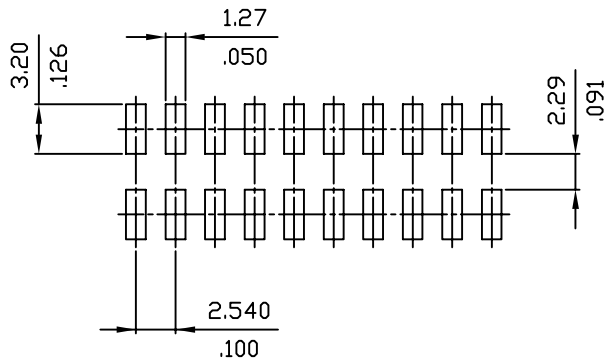
RoHS COMPLIANT

Ordering Information :

2558 P $\frac{**}{1} \frac{M}{2} \frac{*}{3} 00$

1. No. of circuits
2. SMT TYPE
3. Plating :

T= Tin plated 120 μ " min. over 30~50 μ " nickel overall
 U= Gold flash over 30~50 μ " nickel overall
 W= 15 μ " gold over 30~50 μ " nickel overall
 Z= 30 μ " gold over 30~50 μ " nickel overall
 F= Selective gold flash over 30~50 μ " nickel overall
 J= 15 μ " gold plated selective over 30~50 μ " nickel overall
 K= 30 μ " gold plated selective over 30~50 μ " nickel overall



Empfohlenes Platinenlayout

				leoco LEOCO CORPORATION		APPROVED:		PART NO.: 2558P**M*00				
				GENERAL TOLERANCES: (UNLESS SPECIFIED)		DATE:		TITLE: HEADER				
C	ES071009						CHECKED:					
B	ES051213						DATE:					
A	DWG REL						DRAWN:	DRAWING NO.: 255832S				
REV.	ECO. NO.	CHG.	APP.				DATE:	UNITS	SCALE	SIZE	SHEET	REV.
								$\frac{mm}{inch}$	4:1	A4	2/2	C
							ANGULAR $\pm ? 1^\circ ?$					