

MATERIAL:
 PIN : PHOSPHOR BRONZE
 WAFER : NYLON46 UL94V-0
 SHELL: PHOSPHOR BRONZE/TIN-PLATED

RoHS COMPLIANT

Ordering information:

1008P**M*0*
 1 2 3

1.No.of circuits

2.Plating

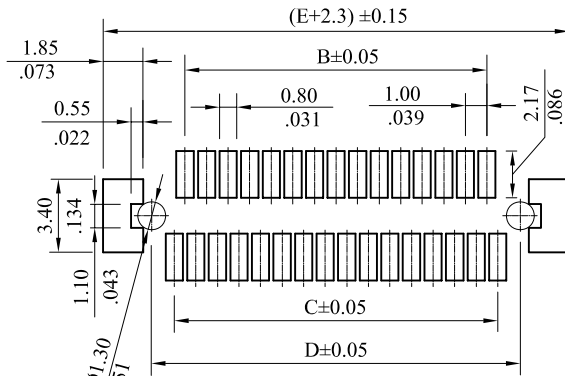
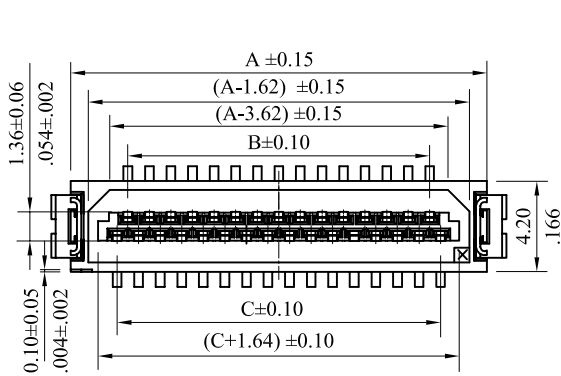
0 = Tin plated 120u"over 30u"min. nickel overall

U = Gold flash over 30u"min. nickel overall

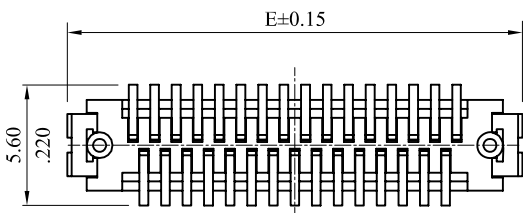
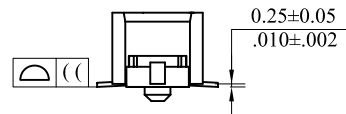
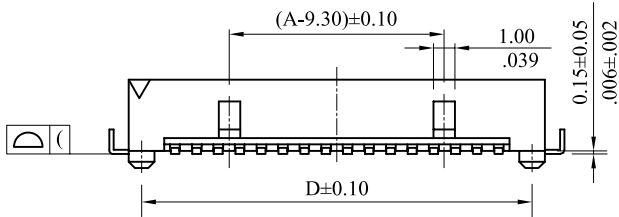
F = Selective gold flash on contact area over 30u"min. nickel overall

3. Packing

0=Tube ,1=Tape & Reel



Recommended P.C.B Layout (Top Side)
 P.C.B Thickness = 1.20 mm



PART NO	Dimensions				
	A	B	C	D	E
1008P21M*0*	14.3(.563)	9.0(.354)	11.0(.433)	13.1(.516)	16.1(.634)
1008P31M*0*	19.3(.760)	14.0(.551)	15.0(.591)	18.1(.713)	21.1(.831)
1008P41M*0*	24.3(.957)	19.0(.748)	20.0(.787)	23.1(.909)	26.1(1.028)
1008P51M*0*	29.3(1.154)	24.0(.945)	25.0(.984)	28.1(1.106)	31.1(1.224)

leoco LEOCO CORPORATION

GENERAL TOLERANCES:
 (UNLESS SPECIFIED)

	mm	inch
1 PLACE	± 0.30	± --
2 PLACES	± 0.20	± .012
3 PLACES	± 0.10	± .008
4 PLACES	± --	± .004

ANGULAR ± (1°)

APPROVED: CHARD

PART NO.:

1008P**M*0*

DATE:

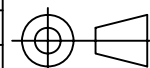
CHECKED: ANGEL

TITLE:
 1.0Pitch SMT 180° Male connector

DATE:

DRAWN: SAM
 2011.10.14

DRAWING NO.:
 100802S



UNITS

mm

SCALE	SIZE	SHEET	REV.
3:1	A4	1/1	A

REV.	ECO. NO.	CHG.	APP.
A	DWG REL		