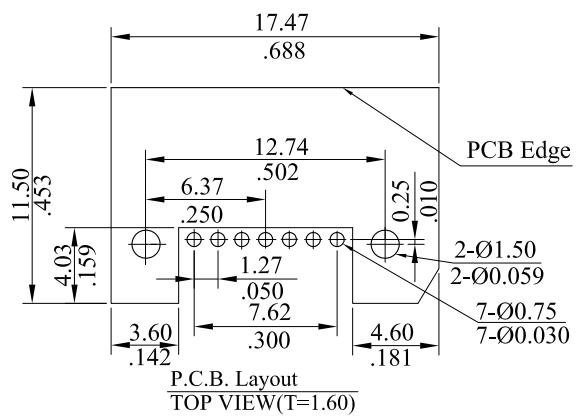
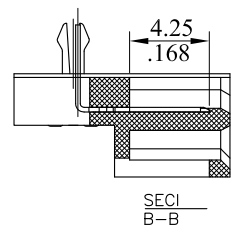
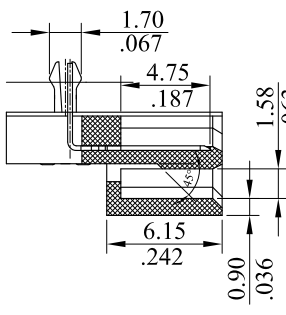
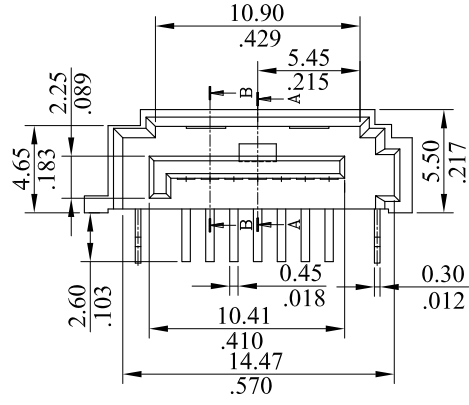
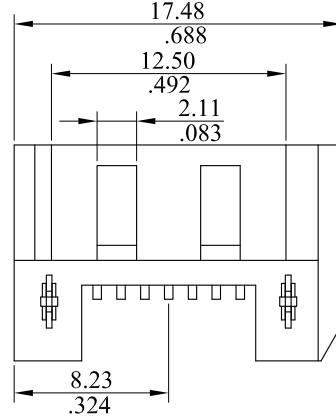
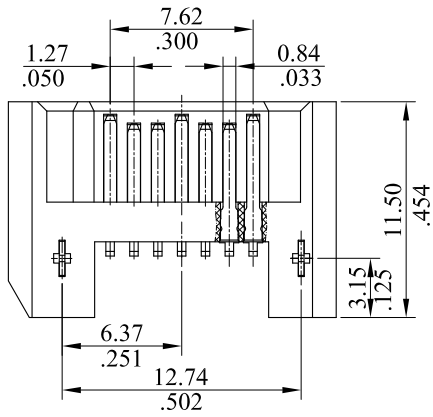


Electrical  
 Current rating: 1.5 AMP  
 Dielectric withstanding voltage: AC 500V min(for 1 minute)  
 Insulation resistance:500MΩmin(at 500V DC)  
 Contact resistance:30mΩ max. mated  
 Working temperature:-55° to +105°

RoHS COMPLIANT



SECI  
A-A

SECI  
B-B

1283 P 07 H \* 0 B  
 1 2 3 4 5 6

1. Series No
2. P=Plug
3. No. of circuits
4. Type of the connector  
H=Through hole Type (90°)
5. Plating  
0=Selective gold flash  
J=Selective 15u" gold  
K= Selective 30u" gold
6. Special description  
B=B type

NO.	PART NAME	DESCRIPTION	THICKNESS	QTY	SUPPLIER
3	CONTACT GROUND	Brass	0.30mm	2	B0001
2	TERMINAL	Brass	0.25mm	7	B0001
1	INSULATOR	LCP		1	B0001

**leoco** LEOCO CORPORATION

GENERAL TOLERANCES:  
(UNLESS SPECIFIED)

	mm	inch
1 PLACE	± 0.30	± ---
2 PLACES	± 0.20	± .012
3 PLACES	± 0.10	± .008
4 PLACES	± ---	± .004

ANGULAR ± ( 1° )

APPROVED:	PART NO.:			
DATE:	1283P07H*0B			
CHECKED:	TITLE:			
DATE:	SATA 7P MALE PCB STRAIGHT 90°TYPE			
DRAWN:	DRAWING NO.:			
DATE:	128303S			
UNITS	SCALE	SIZE	SHEET	REV.
$\frac{mm}{inch}$	4:1	A4	1/1	A

REV.	ECO. NO.	CHG.	APP.
A	DWG REL		