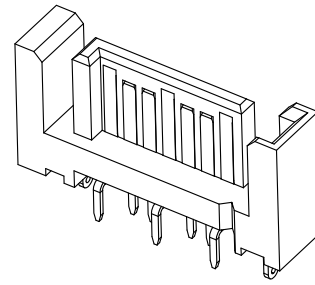


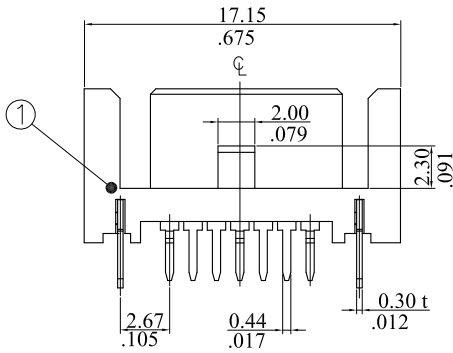
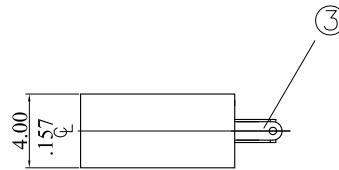
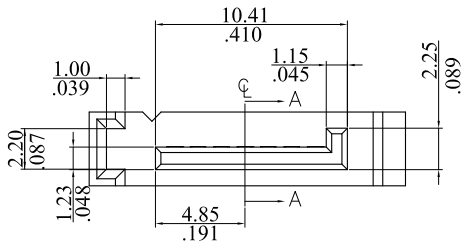
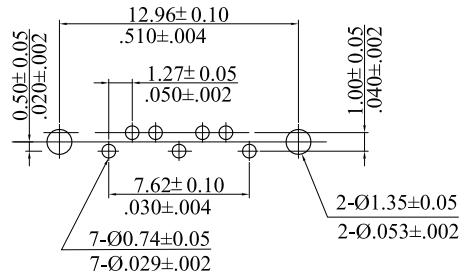
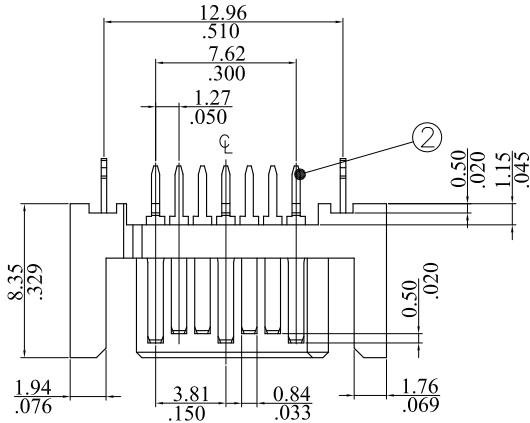
RoHS COMPLIANT

Electrical
 Current rating: 1.5 AMP
 Dielectric withstanding voltage: AC 500V min(for 1 minute)
 Insulation resistance:500MΩ min.(at 500V DC)
 Contact resistance:30mΩ max. mated
 Working temperature:-55°to +105°



1283P07V 0 0 0

0=Selective gold flash
 J=Selective 15u" gold
 K= Selective 30u" gold



3	Latch	BRASS C2680	Gold/Ki Plated	
2	Terminal	BRASS C2680	Gold/Tin Plated	
1	Housing	L. C. P	Black UL 94V-0	
NO.	DESCRIPTION	MATERIAL	COLOR	REMARK

leoco LEOCO CORPORATION

GENERAL TOLERANCES:
(UNLESS SPECIFIED)

	mm	inch
1 PLACE	± 0.30	± --
2 PLACES	± 0.20	± .012
3 PLACES	± 0.10	± .008
4 PLACES	± --	± .004

ANGULAR ± (1°)

APPROVED:	PART NO.:			
DATE:	1283P07V*00			
CHECKED:	TITLE:			
DATE:	SATA 7P MALE STRAIGHT DIP TYPE			
DRAWN:	DRAWING NO.:			
DATE:	128301S			
UNITS	SCALE	SIZE	SHEET	REV.
mm inch	4:1	A4	1/1	A

A	DWG REL		
REV.	ECO. NO.	CHG.	APP.