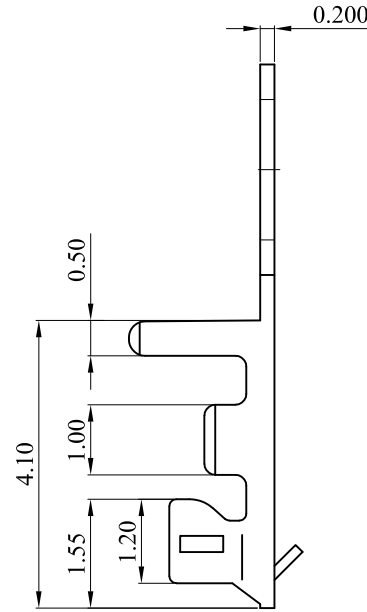
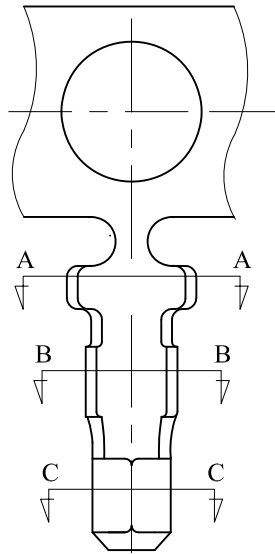
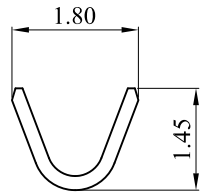


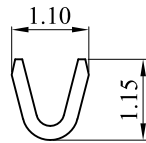
REV.	ECO. NO.	DESCRIPTION	DATE
A	DWG. REL.	APPROVED	
B	ES101222	UPDATE	
C	ES211208	UPDATE	2021.12.15



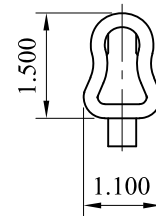
Note:
 Material: Phosphor Bronze
 Plating: Tin plated 120u"min. over 30u" min nickel overall
 Wire Range: AWG#26~32



SECTION A-A



SECTION B-B



SECTION C-C

TOLERANCE UNLESS OTHERWISE SPECIFIED			LEOCO CORPORATION http://www.leoco.com.tw			
mm	mm	inch	APPROVED BY:	DATE:	TITLE:	
1 PLACE	± 0.30	± ---	Chard	2021.12.15	1.50mm Pitch Crimp Terminal	
2 PLACES	± 0.20	± ---	CHECKED BY:	DATE:	PART NO.:	
3 PLACES	± 0.10	± ---	Spring	2021.12.15	1510TPB0000	
4 PLACES	± ---	± ---	DRAWN BY:	DATE:	DRAWING NO.:	REV.:
ANGULAR ±1°			Angel	2021.12.15	151002S	C
			SIZE: A3	SCALE: 1:1	SHEET: 1 OF 1	