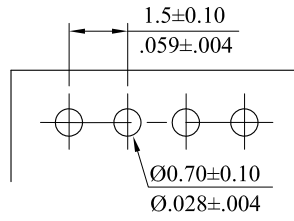
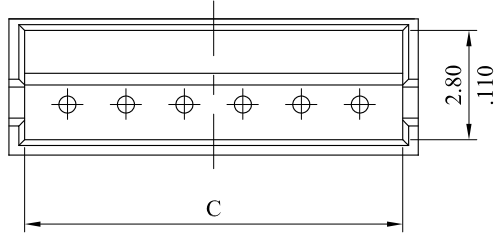


*** 1511 SERIES ***

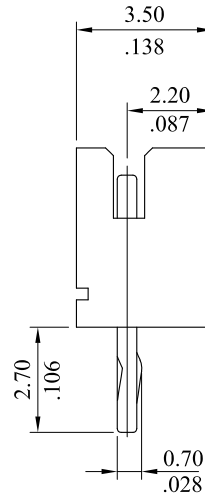
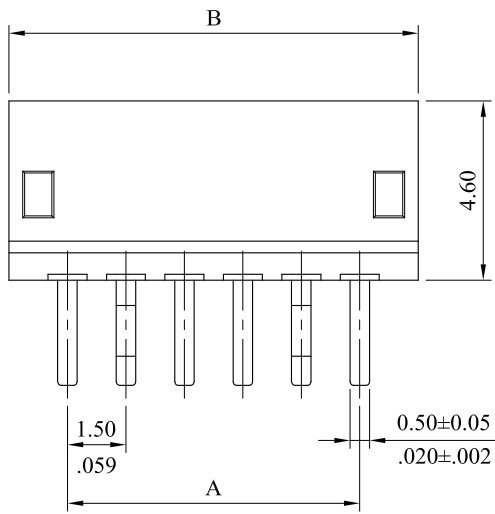
RoHS COMPLIANT

Material : NYLON 66,UL94V-0

Contact: Brass/Tin-plated



Recommend Hole Pattern



Circuits	DIM. A	DIM. B	DIM. C	Circuits	DIM. A	DIM. B	DIM. C
2	1.50(.059)	4.50(.177)	3.70(.146)	8	10.50(.413)	13.50(.531)	12.70(.500)
3	3.00(.118)	6.00(.236)	5.20(.205)	9	12.00(.472)	15.00(.590)	14.20(.559)
4	4.50(.177)	7.50(.295)	6.70(.264)	10	13.50(.531)	16.50(.650)	15.70(.618)
5	6.00(.236)	9.00(.354)	8.20(.323)	11	15.00(.590)	18.00(.709)	17.20(.677)
6	7.50(.295)	10.50(.413)	9.70(.382)	12	16.50(.650)	19.50(.768)	18.70(.736)
7	9.00(.354)	12.00(.472)	11.20(.441)	13	18.00(.709)	21.00(.827)	20.20(.795)

				leoco LEOCO CORPORATION		APPROVED:		PART NO.:											
				GENERAL TOLERANCES: (UNLESS SPECIFIED)		DATE:		1511P**V000											
						CHECKED:		TITLE:											
C				ES101222		DATE:		HEADER											
						DRAWN:		DRAWING NO.:											
B				ES101022		DATE:		151101S											
A				DWG REL		DATE:													
REV.				ECO. NO.		CHG.		APP.		UNITS		SCALE		SIZE		SHEET		REV.	
										mm inch		5:1		A4		1/1		C	
						ANGULAR ± (1°)													