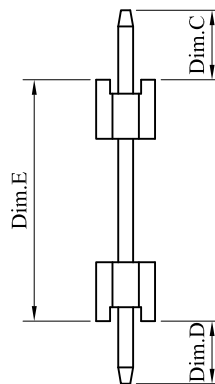
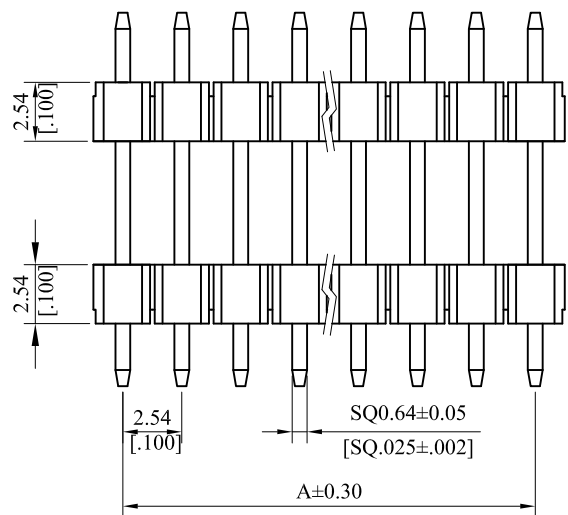
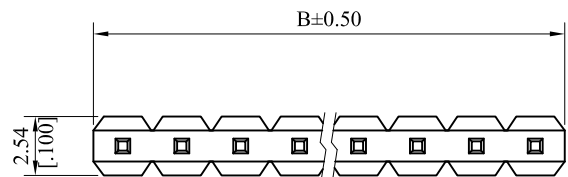


RoHS COMPLIANT

CUSTOMER DRAWING		
REV.	ECO. NO.	DESCRIPTION
T	ES081178	
U	ES101238	
V	ES110711	
W	ES140118	ADD Pin Length:LM2&LM8
X	ES140416	Remove max overall length
Y	ES170106	Material: PBT→PA6T



Material:
Insulator: PA6T, UL94V-0,Black
Contact: Brass

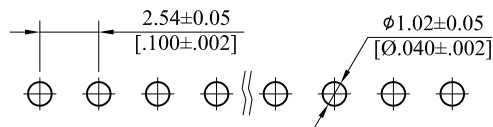
General Part Number:
2566P ** * L**
1 2 3

1.No.of circuits(1~40)

2.Plating

- T= Tin plated 120u"min.over 30u" min. Nickel underplating overall
- M= Matte Tin plated 80u"min.over 30u" min. Nickel underplating overall
- U= Gold flash over 30u" min. Nickel underplating overall
- W= 15μ "min. Gold over 30μ " min. Nickel underplating overall
- Z= 30μ "min. Gold over 30μ " min. Nickel underplating overall

A=2.54mm *No.of spaces
B=A+2.54mm



PCB.Layout

TOLERANCE UNLESS OTHERWISE SPECIFIED			LEOCO CORPORATION <i>http://www.leoco.com.tw</i>		
mm	mm	inch	APPROVED BY:	DATE:	TITLE:
[inch]			Chard	2017.01.05	2.54 Pitch Pin Header
			CHECKED BY:	DATE:	
1 PLACE	± 0.30	± ---	Angel	2017.01.05	PART NO.: 2566P***L**
2 PLACES	± 0.20	± .012	DRAWN BY:	DATE:	
3 PLACES	± 0.10	± .008	Spring	2017.01.05	
4 PLACES	± ---	± .004	SIZE:	SCALE:	
ANGULAR ±1°			A3	1:1	DRAWING NO.: 256601
					REV.: Y
					SHEET: 1 OF 2

RoHS COMPLIANT

CUSTOMER DRAWING

REV.	ECO. NO.	DESCRIPTION
T	ES081178	
U	ES101238	
V	ES110711	
W	ES140118	ADD Pin Length:LM2&LM8
X	ES140416	Remove max overall length
Y	ES170106	Materia: PBT→PA6T

No.	Part No.	Pin Part No.	Dim. C	Dim. D	Dim. E
1	2566P***L01	*SP06402100	3.00(.118)	3.00(.118)	15.00(.591)
2	2566P***L02	*SP06402061	3.50(.138)	3.50(.138)	13.61(.536)
3	2566P***L03	*SP06402500	3.00(.118)	3.00(.118)	19.00(.748)
4	2566P***L04	*SP06403600	4.00(.157)	3.00(.118)	29.00(1.142)
5	2566P***L05	*SP06403200	3.00(.118)	3.00(.118)	26.00(1.024)
6	2566P***L06	*SP06402061	6.10(.240)	3.31(.130)	11.20(.441)
7	2566P***L07	*SP06401655	3.10(.122)	5.45(.215)	8.00(.315)
8	2566P***L08	*SP06402550	7.50(.295)	3.00(.138)	15.00(.590)
9	2566P***L09	*SP06402870	8.90(.350)	2.80(.110)	17.00(.669)
10	2566P***L10	*SP06401990	5.80(.228)	2.90(.114)	11.20(.441)
11	2566P***L11	*SP06402180	6.80(.268)	3.60(.142)	11.40(.449)
12	2566P***L12	*SP06402061	2.90(.114)	3.00(.118)	14.71(.579)
13	2566P***L13	*SP06402180	8.20(.323)	3.60(.142)	10.00(.394)
14	2566P***L14	*SP06402550	10.25(.404)	2.95(.116)	9.00(.354)
15	2566P***L15	*SP06402220	10.25(.404)	2.95(.116)	9.00(.354)
16	2566P***L16	*SP06402550	10.25(.404)	3.25(.128)	12.00(.472)
17	2566P***L17	*SP06403400	9.00(.354)	3.00(.118)	22.00(.866)
18	2566P***L18	*SP06403200	6.20(.244)	3.40(.134)	22.40(.882)
19	2566P***L19	*SP06402550	5.90(.232)	3.00(.118)	16.60(.654)
20	2566P***L20	*SP06402130	7.80(.307)	3.00(.118)	10.50(.413)
21	2566P***L21	*SP06402222	6.73(.265)	2.54(.100)	12.95(.510)
22	2566P***L22	*SP06402400	10.60(.417)	3.30(.130)	10.10(.398)
23	2566P***L23	*SP06402990	9.00(.354)	9.00(.354)	11.90(.469)
24	2566P***L24	*SP06403200	10.00(.394)	3.00(.118)	19.00(.748)
25	2566P***L25	*SP06401940	3.20(.126)	3.20(.126)	13.00(.512)
26	2566P***L26	*SP06401900	3.00(.118)	2.54(.100)	13.46(.530)
27	2566P***L27	*SP06401346	6.22(.245)	1.40(.055)	5.84(.230)
28	2566P***L29	*SP06403255	10.00(.394)	3.50(.138)	19.05(.750)
29	2566P***L30	*SP06403340	9.00(.354)	3.00(.118)	21.40(.843)
30	2566P***L31	*SP06403100	8.00(.315)	4.00(.157)	19.00(.748)
31	2566P***L32	*SP06403165	6.35(.250)	7.80(.307)	17.50(.687)
32	2566P***L34	*SP06401780	6.30(.248)	3.00(.118)	8.50(.335)
33	2566P***L35	*SP06402700	7.20(.283)	3.00(.118)	16.80(.661)
34	2566P***L42	*SP06402550	8.00(.315)	3.00(.118)	14.50(.571)
35	2566P***L45	*SP06401700	3.50(.138)	3.50(.138)	10.00(.394)
36	2566P***L47	*SP06401400	3.00(.118)	3.00(.118)	8.00(.315)
37	2566P***L53	*SP06401970	6.30(.248)	3.30(.130)	10.10(.398)
38	2566P***L61	*SP06403073	3.81(.150)	8.38(.330)	18.54(.730)

No.	Part No.	Pin Part No.	Dim. C	Dim. D	Dim. E
39	2566P***L62	*SP06402210	6.00(.236)	3.10(.122)	13.00(.512)
40	2566P***L67	*SP06401875	3.00(.118)	3.00(.118)	12.75(.502)
41	2566P***L72	*SP06402616	3.00(.118)	3.00(.118)	20.16(.794)
42	2566P***L74	*SP06401169	3.18(.125)	3.18(.125)	5.33(.210)
43	2566P***L79	*SP06401029	1.52(.060)	3.18(.125)	5.59(.220)
44	2566P***L82	*SP06401854	2.54(.100)	8.38(.330)	7.62(.300)
45	2566P***L84	*SP06401250	3.50(.138)	3.50(.138)	5.50(.217)
46	2566P***L86	*SP06401788	10.00(.394)	2.80(.110)	5.08(.200)
47	2566P***L87	*SP06402608	6.90(.272)	2.67(.105)	16.51(.650)
48	2566P***L89	*SP06402686	5.86(.231)	3.00(.118)	18.00(.709)
49	2566P***L90	*SP06401235	3.00(.118)	3.00(.118)	6.35(.250)
50	2566P***L93	*SP06402900	10.00(.394)	3.00(.118)	16.00(.630)
51	2566P***L94	*SP06401508	5.00(.197)	5.00(.197)	5.08(.200)
52	2566P***L95	*SP06401200	3.00(.118)	3.00(.118)	6.00(.236)
53	2566P***L96	*SP06401600	3.00(.118)	3.00(.118)	10.00(.394)
54	2566P***L97	*SP06401500	3.00(.118)	3.00(.118)	9.00(.354)
55	2566P***L98	*SP06401130	3.00(.118)	2.50(.100)	5.80(.228)
56	2566P***L99	*SP06401620	3.10(.122)	2.7(.106)	10.4(.409)
57	2566P***LA0	*SP06401940	6.00(.236)	3.00(.118)	10.40(.409)
58	2566P***LA1	*SP06401810	4.00(.157)	2.50(.098)	11.6(.457)
59	2566P***LA2	*SP06401680	5.90 (.232)	2.60 (.102)	8.30 (.327)
60	2566P***LA8	*SP06401108	3.00(.118)	3.00(.118)	5.08(.200)
61	2566P***LK5	*SP06402350	10.20(.402)	3.30(.130)	10.00(.394)
62	2566P***LL1	*SP06401976	4.00(.157)	3.46(.136)	12.30(.484)
63	2566P***LL2	*SP06401700	6.00(.236)	3.00(.118)	8.00(.315)
64	2566P***LL3	*SP06402030	4.00(.157)	4.00(.157)	12.30(.484)
65	2566P***LM2	*SP06401856	3.78(.149)	3.78(.149)	11.00(.433)
66	2566P***LM8	*SP06402600	3.00(.118)	4.00(.157)	19.00(.748)

TOLERANCE UNLESS OTHERWISE SPECIFIED			 LEOCO CORPORATION http://www.leoco.com.tw		
mm			APPROVED BY:	DATE:	TITLE:
[inch]	mm	inch	Chard	2017.01.05	2.54 Pitch Pin Header
1 PLACE	± 0.30	± ---	CHECKED BY:	DATE:	
2 PLACES	± 0.20	± .012	Angel	2017.01.05	PART NO.: 2566P***L**
3 PLACES	± 0.10	± .008	DRAWN BY:	DATE:	
4 PLACES	± ---	± .004	Spring	2017.01.05	DRAWING NO.: 256601
ANGULAR ±1°			SIZE: A3	SCALE: 1:1	 SHEET: 2 OF 2