

**MATERIAL:**

- \* Contact: Brass
- \* Insulator: UL 94V-2 Nylon 6/6

3963S \*\* R \* 00

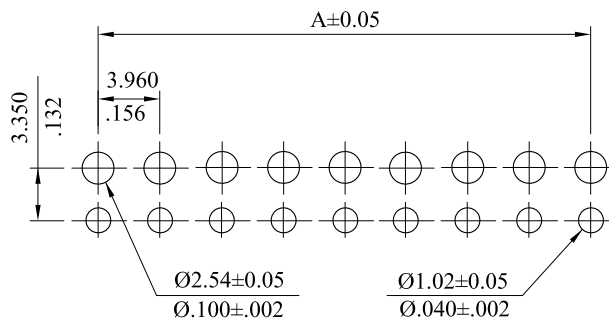
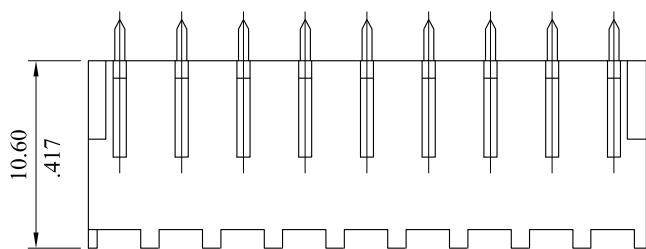
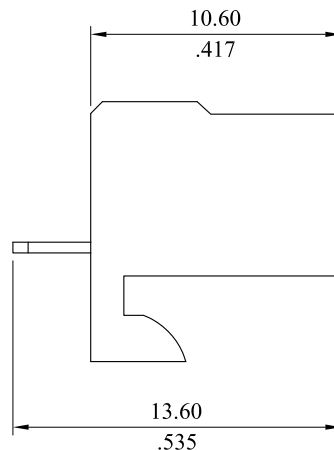
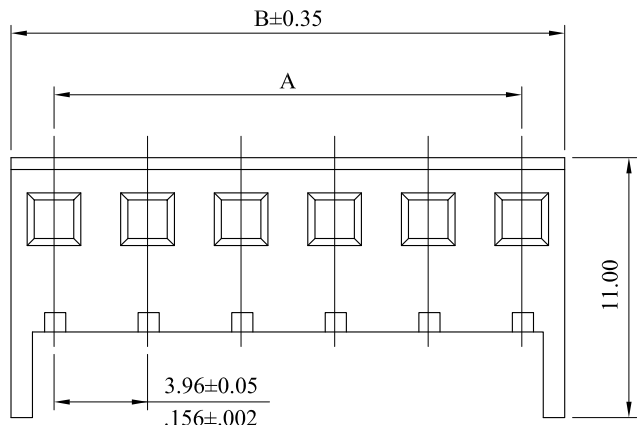
1 2

**RoHS COMPLIANT**

1. No. Of Circuits

2. Plating:

- 0= Tin plated 120μ " min over 30μ " min. nickel overall
- U= Gold flash over 30μ " min. nickel overall



Recommended Hole Pattern

CIRCUITS	PART NO.	DIM. A	DIM. B	CIRCUITS	PART NO.	DIM. A	DIM. B
2	3963S02R*00	3.96(.156)	8.06(.317)	9	3963S09V*00	31.68(1.248)	35.78(1.409)
3	3963S03V*00	7.92(.312)	12.02(.473)	10	3963S10V*00	35.64(1.403)	39.74(1.565)
4	3963S04V*00	11.88(.468)	15.98(.629)	11	3963S11V*00	39.60(1.560)	43.70(1.720)
5	3963S05V*00	15.84(.624)	19.94(.785)	12	3963S12V*00	43.56(1.716)	47.66(1.876)
6	3963S06V*00	19.80(.780)	23.90(.941)	13	3963S13V*00	47.52(1.871)	51.62(2.032)
7	3963S07V*00	23.76(.936)	27.86(1.097)	14	3963S14V*00	51.48(2.027)	55.58(2.188)
8	3963S08V*00	27.72(1.091)	31.82(1.253)	15	3963S15V*00	55.44(2.183)	59.54(2.344)

				<b>LEOCO CORPORATION</b>	APPROVED:		PART NO.:																			
					DATE:		3963S**R*00																			
				GENERAL TOLERANCES: (UNLESS SPECIFIED)		CHECKED:		TITLE:																		
						DATE:		HEADER																		
C	ES101224			<table border="1"> <thead> <tr> <th></th> <th>mm</th> <th>inch</th> </tr> </thead> <tbody> <tr> <td>1 PLACE</td> <td>± 0.30</td> <td>± --</td> </tr> <tr> <td>2 PLACES</td> <td>± 0.20</td> <td>± .012</td> </tr> <tr> <td>3 PLACES</td> <td>± 0.10</td> <td>± .008</td> </tr> <tr> <td>4 PLACES</td> <td>± --</td> <td>± .004</td> </tr> </tbody> </table>			mm	inch	1 PLACE	± 0.30	± --	2 PLACES	± 0.20	± .012	3 PLACES	± 0.10	± .008	4 PLACES	± --	± .004	DRAWN:		DRAWING NO.:			
	mm	inch																								
1 PLACE	± 0.30	± --																								
2 PLACES	± 0.20	± .012																								
3 PLACES	± 0.10	± .008																								
4 PLACES	± --	± .004																								
B	ES050815			DATE:		396302S																				
A	DWG REL			ANGULAR ± ( 1° )				UNITS		SCALE	SIZE	SHEET	REV.													
REV.	ECO. NO.	CHG.	APP.					mm / inch		3:1	A4	1/1	C													