

1

2

3

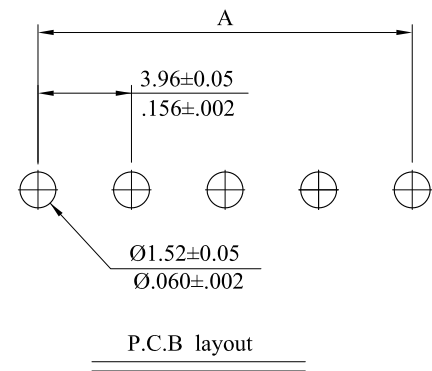
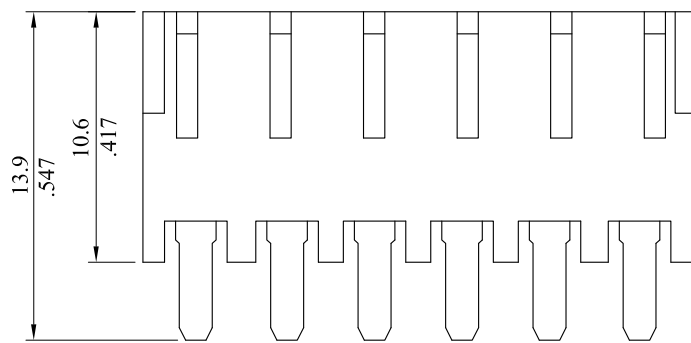
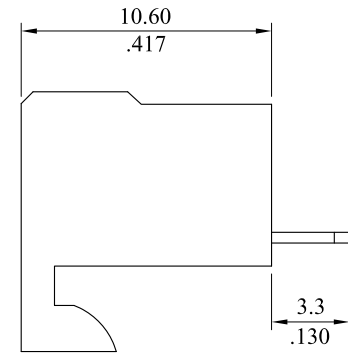
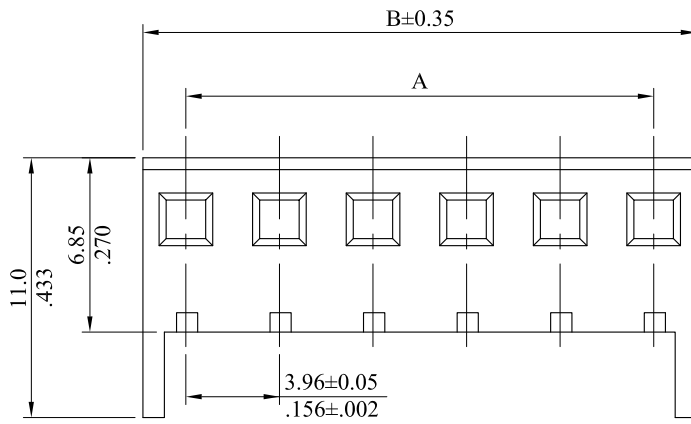
4

MATERIAL:
 * Contact: Brass
 * Insulator: UL 94V-2 Nylon 6/6

3963S ** V * 00
 $\frac{1}{1} \frac{2}{2}$

RoHS COMPLIANT

- No. of circuits
- Plating:
 0= Tin plated 120 μ " min over 30 μ " min. nickel overall
 U= Gold flash over 30 μ " min. nickel overall



Circuits	PART NO.	DIM. A	DIM. B	Circuits	PART NO.	DIM. A	DIM. B
2	3963S02V*00	3.96(.156)	8.06(.317)	9	3963S09V*00	31.68(1.248)	35.78(1.409)
3	3963S03V*00	7.92(.312)	12.02(.473)	10	3963S10V*00	35.64(1.403)	39.74(1.565)
4	3963S04V*00	11.88(.468)	15.98(.629)	11	3963S11V*00	39.60(1.560)	43.70(1.720)
5	3963S05V*00	15.84(.624)	19.94(.785)	12	3963S12V*00	43.56(1.716)	47.66(1.876)
6	3963S06V*00	19.80(.780)	23.90(.941)	13	3963S13V*00	47.52(1.871)	51.62(2.032)
7	3963S07V*00	23.76(.936)	27.86(1.097)	14	3963S14V*00	51.48(2.027)	55.58(2.188)
8	3963S08V*00	27.72(1.091)	31.82(1.253)	15	3963S15V*00	55.44(2.183)	59.54(2.344)

				LECO CORPORATION	APPROVED:		PART NO.: 3963S**V*00					
D	ES101224				GENERAL TOLERANCES: (UNLESS SPECIFIED)		DATE:		TITLE: 3.96mm PCB CONNECTOR			
C	ES051210					CHECKED:						
B	ES050401					DATE:		DRAWING NO.: 396301S				
A	DWG REL					DRAWN:						
REV.	ECO. NO.	CHG.	APP.			DATE:						
								UNITS	SCALE	SIZE	SHEET	REV.
						ANGULAR $\pm (1^\circ)$		$\frac{mm}{inch}$	3:1	A4	1/1	D

1

2

3

4