

Note:

1. Material: Insulator: PA66+30% G/F UL94V-0
Terminal: Copper alloy

2. Contact:

5011TCBTH**:

Tin Plated 120 u" over Ni 30 u" min

5011TCBSH** :

Silver Plated 80~120 u" over Ni 30 u" min

Ordering Information:

5011P $\frac{**}{1}$ $\frac{H}{2}$ $\frac{**}{3}$ $\frac{**}{4}$

1. No. of circuits

2. Type:

H=Normal type R=Reverse type

3. Terminal:

T=Assemble terminal 5011TCBTHC*

L=Assemble terminal 5011TCBTHD*

J=Assemble terminal 5011TCBTHC*

With special layout

G=Assemble terminal 5011TCBTHD*

With special layout

C=Assemble terminal 5011TCBSHC*

D=Assemble terminal 5011TCBSHD*

K=Assemble terminal 5011TCBSHC*

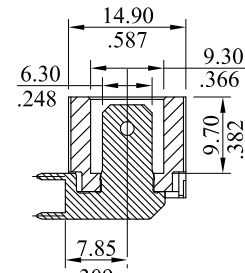
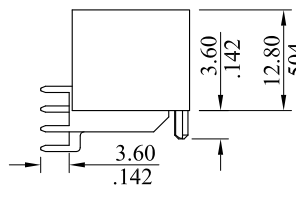
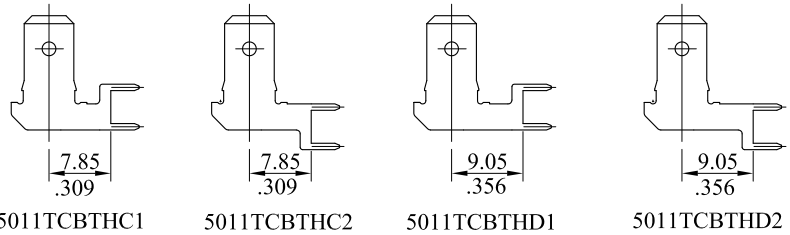
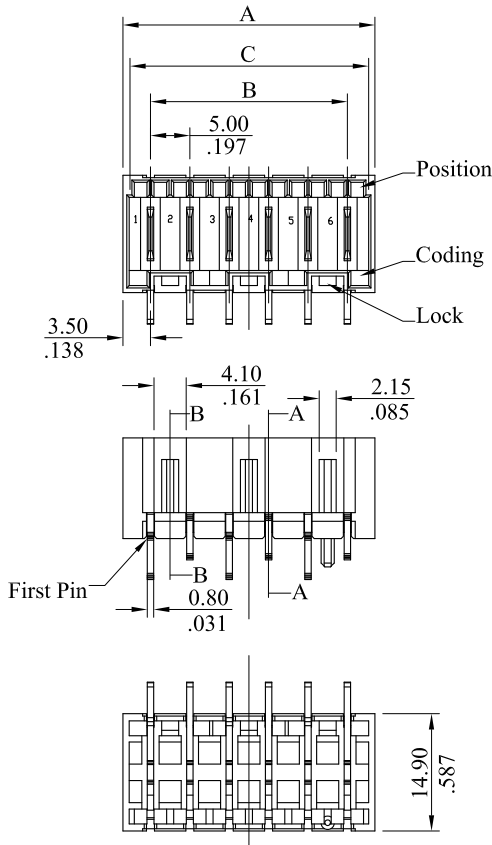
With special layout

Z=Assemble terminal 5011TCBSHD*

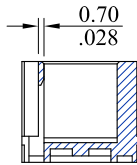
With special layout

4. See the Table of next page.

RoHS COMPLIANT

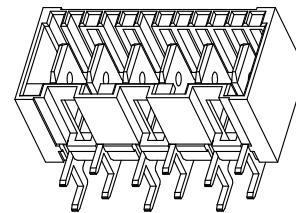


SECTION A-A



SECTION B-B

12	62.0(2.441)	55.0(2.165)	60.2(2.370)
11	57.0(2.244)	50.0(1.969)	55.2(2.173)
10	52.0(2.047)	45.0(1.712)	50.2(1.975)
9	47.0(1.850)	40.0(1.575)	45.2(1.780)
8	42.0(1.654)	35.0(1.378)	40.2(1.583)
7	37.0(1.457)	30.0(1.181)	35.2(1.386)
6	32.0(1.260)	25.0(.984)	30.2(1.189)
5	27.0(1.063)	20.0(.787)	25.2(.992)
4	22.0(.886)	15.0(.591)	20.2(.795)
3	17.0(.669)	10.0(.394)	15.2(.598)
2	12.0(.472)	5.0(.197)	10.2(.402)
CIRCUITS	DIM.A	DIM.B	DIM.C



NORMAL

E	K	ES140903	Fixed terminal appearance and add KEYchanges	LECO CORPORATION GENERAL TOLERANCES: (UNLESS SPECIFIED)	APPROVED:	PART NO.:					
	J	ES130731	add KEYchanges		Chard	5011P*****					
	I	ES130618			Topmoon	CHECKED:	TITLE:				
	H	ES120315			Chaos	DATE: 09/03'13	Wafer				
	G	ES101253				DATE: 09/03'13	DRAWING NO.:				
	REV.	ECO. NO.	DISCRIPTION				501103S				
				mm inch 1 PLACE ± 0.30 ± -- 2 PLACES ± 0.20 ± .012 3 PLACES ± 0.10 ± .008 4 PLACES ± -- ± .004	DATE: 09/03'13 DRAWN: DATE: 09/03'13	UNITS mm inch	SCALE	SIZE	SHEET	REV.	
				ANGULAR ± (1°)		1:1	A4	1/7	K		

Note:

- Material: Insulator: PA66+30% G/F UL94V-0
Terminal: Copper alloy
- Contact:
5011TCBTH**:
Tin Plated 120 u" over Ni 30 u" min
5011TCBSH**:
Silver Plated 80~120 u" over Ni 30 u" min

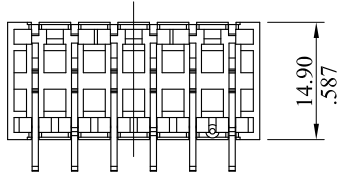
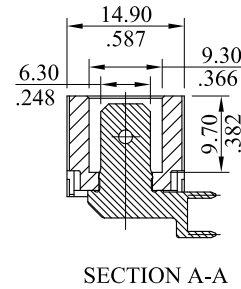
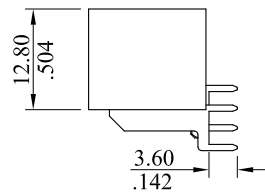
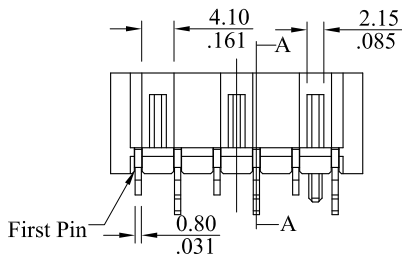
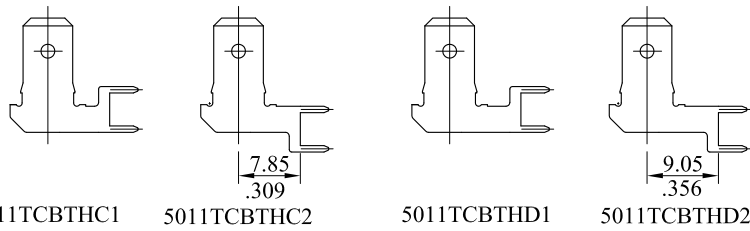
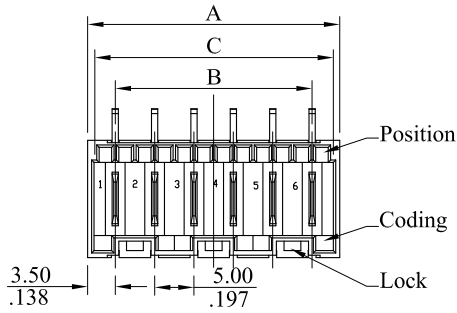
Ordering Information:

5011P $\frac{**}{1}$ $\frac{R}{2}$ $\frac{**}{3}$ $\frac{**}{4}$

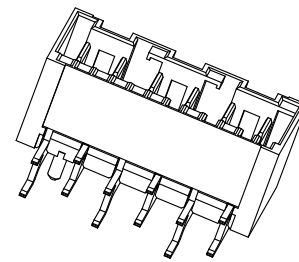
RoHS COMPLIANT

- No. of circuits
- Type:
H=Normal type R=Reverse type
- Terminal:
T=Assemble terminal 5011TCBTHC*
L=Assemble terminal 5011TCBTHD*
J=Assemble terminal 5011TCBTHC*
With special layout
G=Assemble terminal 5011TCBTHD*
With special layout
- See the Table of next page.

- C=Assemble terminal 5011TCBSHC*
- D=Assemble terminal 5011TCBSHD*
- K=Assemble terminal 5011TCBSHC*
With special layout
- Z=Assemble terminal 5011TCBSHD*
With special layout



12	62.0(2.441)	55.0(2.165)	60.2(2.370)
11	57.0(2.244)	50.0(1.969)	55.2(2.173)
10	52.0(2.047)	45.0(1.712)	50.2(1.975)
9	47.0(1.850)	40.0(1.575)	45.2(1.780)
8	42.0(1.654)	35.0(1.378)	40.2(1.583)
7	37.0(1.457)	30.0(1.181)	35.2(1.386)
6	32.0(1.260)	25.0(.984)	30.2(1.189)
5	27.0(1.063)	20.0(.787)	25.2(.992)
4	22.0(.886)	15.0(.591)	20.2(.795)
3	17.0(.669)	10.0(.394)	15.2(.598)
2	12.0(.472)	5.0(.197)	10.2(.402)
CIRCUITS	DIM.A	DIM.B	DIM.C



REVERSE

K	ES140903	Fixed terminal appearance and add KEYchanges	LEOCO CORPORATION	APPROVED:	PART NO.:																				
J	ES130731	add KEYchanges		GENERAL TOLERANCES: (UNLESS SPECIFIED)	Chard	5011P*****																			
I	ES130618		<table border="1"> <thead> <tr> <th></th> <th>mm</th> <th>inch</th> </tr> </thead> <tbody> <tr> <td>1 PLACE</td> <td>± 0.30</td> <td>± --</td> </tr> <tr> <td>2 PLACES</td> <td>± 0.20</td> <td>± .012</td> </tr> <tr> <td>3 PLACES</td> <td>± 0.10</td> <td>± .008</td> </tr> <tr> <td>4 PLACES</td> <td>± --</td> <td>± .004</td> </tr> </tbody> </table>		mm	inch	1 PLACE	± 0.30	± --	2 PLACES	± 0.20	± .012	3 PLACES	± 0.10	± .008	4 PLACES	± --	± .004	DATE: 09/03'13	Topmoon	TITLE:				
	mm	inch																							
1 PLACE	± 0.30	± --																							
2 PLACES	± 0.20	± .012																							
3 PLACES	± 0.10	± .008																							
4 PLACES	± --	± .004																							
H	ES120315			CHECKED:	Wafer																				
G	ES101253			DATE: 09/03'13	Chaos	DRAWING NO.:																			
REV.	ECO. NO.	DISCRIPTION	ANGULAR ± (1°)	DRAWN:	501103S																				
					UNITS	SCALE	SIZE	SHEET	REV.																
					mm inch	1:1	A4	2/7	K																

* See from top side

RoHS COMPLIANT

TYPE	0A	0B	0C	0D	0E	0F	0G	0H	0I	0J	0K	0L	0M	0N
KEY/LOCK 2-way														
	0P	0Q	0R	0S	0T	0U	0X	0Z	09	10	11	48	80	86

TYPE	0A	0B	0C	0D	0E	0F	0G	0H	0I	0K	0L
KEY/LOCK 3-way											
	0M	0N	0Q	0W	01	02	03	05	08	10	11
	12	13	1A	2N	2P	31	32	38	39	40	44
	53	65	80	81	98						

TYPE	0A	0B	0C	0D	0E	0F	0G	0H	0I
KEY/LOCK 4-way									
	0J	0K	0L	0M	0W	01	02	03	04
	05	06	12	17	19	37	43	63	65
	80	81	82	84	86	PA	PB		

E	K	ES140903	Fixed terminal appearance and add KEYchanges	LEOCO CORPORATION GENERAL TOLERANCES: (UNLESS SPECIFIED)	APPROVED:	PART NO.:				
	J	ES130731	add KEYchanges		Chard	5011P*****				
	I	ES130618			DATE: 09/03'13	CHECKED:	TITLE:			
	H	ES120315			Topmoon	Wafer				
	G	ES101253			DATE: 09/03'13	DRAWN:	DRAWING NO.:			
	REV.	ECO. NO.	DISCRIPTION		Chaos	501103S				
			4 PLACES	DATE: 09/03'13	UNITS	SCALE	SIZE	SHEET	REV.	
			ANGULAR ± (1°)		mm inch	1:1	A4	3/7	K	

* See from top side

RoHS COMPLIANT

TYPE	0A	0B	0C	0D	0E	0F	0G	0L
KEY/LOCK 5-way								
	01	02	03	04	05	06	07	08
	09	11	12	13	14	17	18	20
	21	22	23	24	25	26	27	28
	29	30	31	32	33	34	35	36
	43	45	49	50	51	64	69	73
	80	81	82	83	84	85	86	87
	88	PB						

TYPE	0A	0B	0C	0D	0E	0I
KEY/LOCK 6-way						
	04	06	14	15	21	29
	30	50	51	71	73	80
	81					

E	K	ES140903	Fixed terminal appearance and add KEYchanges	LECO CORPORATION GENERAL TOLERANCES: (UNLESS SPECIFIED)	APPROVED:	PART NO.:						
	J	ES130731	add KEYchanges		Chard	5011P*****						
	I	ES130618			mm	inch	DATE: 09/03'13	TITLE:				
	H	ES120315			1 PLACE	± 0.30	± --	Topmoon	Wafer			
	G	ES101253			2 PLACES	± 0.20	± .012	Chaos	DRAWING NO.:			
	REV.	ECO. NO.	DISCRPTION		3 PLACES	± 0.10	± .008	DATE: 09/03'13	501103S			
			4 PLACES	± --	± .004		UNITS	SCALE	SIZE	SHEET	REV.	
			ANGULAR ± (1°)			mm	1:1	A4	4/7	K		
				inch								

* See from top side

TYPE	0A	0B	1B	0C	0D	0E
KEY/LOCK 7-way						
	03	04	14	22	23	27
	30	31	32	34	35	38
	40	41	42	43	45	48
	51	59	69	76	80	81
	83					

TYPE	0A	0C	0D	0E	0F	08
KEY/LOCK 8-way						
	10	16	21	30	33	41
	44	45	46	48	49	57
	58	62	63	77	80	81

TYPE	0A	0B	0C	0D	08
KEY/LOCK 9-way					
	31	42	43	48	49
	52	53	57	58	
	80	81			

E	K	ES140903	Fixed terminal appearance and add KEYchanges	LEOCO CORPORATION GENERAL TOLERANCES: (UNLESS SPECIFIED)	APPROVED:	PART NO.:				
	J	ES130731	add KEYchanges		Chard	5011P*****				
	I	ES130618			DATE: 09/03'13	CHECKED:	TITLE:			
	H	ES120315			Topmoon	Wafer				
	G	ES101253			DATE: 09/03'13	DRAWN:	DRAWING NO.:			
	REV.	ECO. NO.	DISCRIPTION		Chaos	501103S				
				DATE: 09/03'13	UNITS	SCALE	SIZE	SHEET	REV.	
					mm inch	1:1	A4	5/7	K	
			ANGULAR ± (1°)							

* See from top side

RoHS COMPLIANT

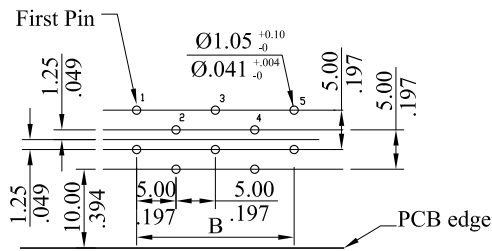
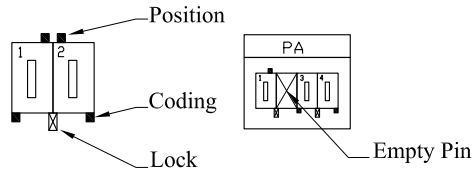
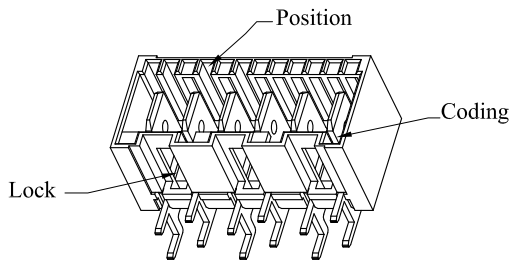
TYPE	0A	01	02	30
KEY/LOCK 10-way				
	36	46	50	51
	52	64	70	72
	74	75	76	80

TYPE	0A	0B	0C	01
KEY/LOCK 11-way				
	12	13	33	55
	60	64	80	

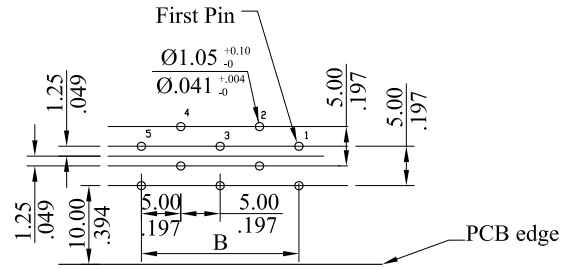
TYPE	27	30	59	65
KEY/LOCK 12-way				
	80			

E	K	ES140903	Fixed terminal appearance and add KEYchanges	LEOCO CORPORATION GENERAL TOLERANCES: (UNLESS SPECIFIED)	APPROVED:	PART NO.:			
	J	ES130731	add KEYchanges		DATE: 09/03'13	5011P*****			
	I	ES130618			CHECKED:	TITLE:			
	H	ES120315			DATE: 09/03'13	Wafer			
	G	ES101253			DRAWN:	DRAWING NO.:			
	REV.	ECO. NO.	DISCRIPTION			DATE: 09/03'13	501103S		
					UNITS mm / inch	SCALE	SIZE	SHEET	REV.
			ANGULAR $\pm (1^\circ)$		1:1	A4	6/7	K	

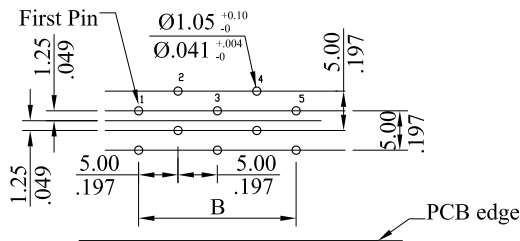
RoHS COMPLIANT



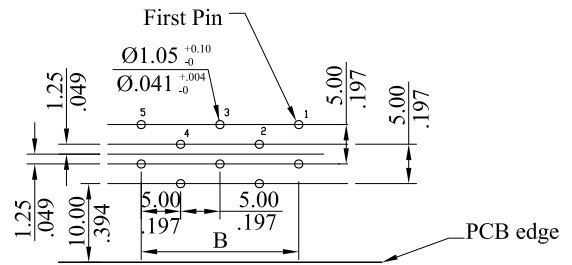
PCB layout for normal
(5011P**HT**/5011P**HL**)



PCB layout for reverse
(5011P**RT**/5011P**RL**)



PCB special layout for normal
(5011P**HJ**/5011P**HG**)



PCB special layout for reverse
(5011P**RJ**/5011P**RG**)

K	ES140903	Fixed terminal appearance and add KEYchanges	LEOCO CORPORATION	APPROVED:		PART NO.:																			
J	ES130731	add KEYchanges		GENERAL TOLERANCES: (UNLESS SPECIFIED)		Chard		5011P*****																	
I	ES130618		<table border="1"> <thead> <tr> <th></th> <th>mm</th> <th>inch</th> </tr> </thead> <tbody> <tr> <td>1 PLACE</td> <td>± 0.30</td> <td>± --</td> </tr> <tr> <td>2 PLACES</td> <td>± 0.20</td> <td>± .012</td> </tr> <tr> <td>3 PLACES</td> <td>± 0.10</td> <td>± .008</td> </tr> <tr> <td>4 PLACES</td> <td>± --</td> <td>± .004</td> </tr> </tbody> </table>				mm	inch	1 PLACE	± 0.30	± --	2 PLACES	± 0.20	± .012	3 PLACES	± 0.10	± .008	4 PLACES	± --	± .004	DATE: 09/03'13		TITLE:		
	mm	inch																							
1 PLACE	± 0.30	± --																							
2 PLACES	± 0.20	± .012																							
3 PLACES	± 0.10	± .008																							
4 PLACES	± --	± .004																							
H	ES120315		ANGLAR ± (1°)		Topmoon		Wafer																		
G	ES101253				DATE: 09/03'13		Chaos		DRAWING NO.:																
REV.	ECO. NO.	DISCRIPTION			DATE: 09/03'13		501103S																		
							UNITS	SCALE	SIZE	SHEET	REV.														
					<table border="1"> <tr> <td>mm</td> <td>inch</td> </tr> </table>		mm	inch	1:1	A4	7/7	K													
mm	inch																								