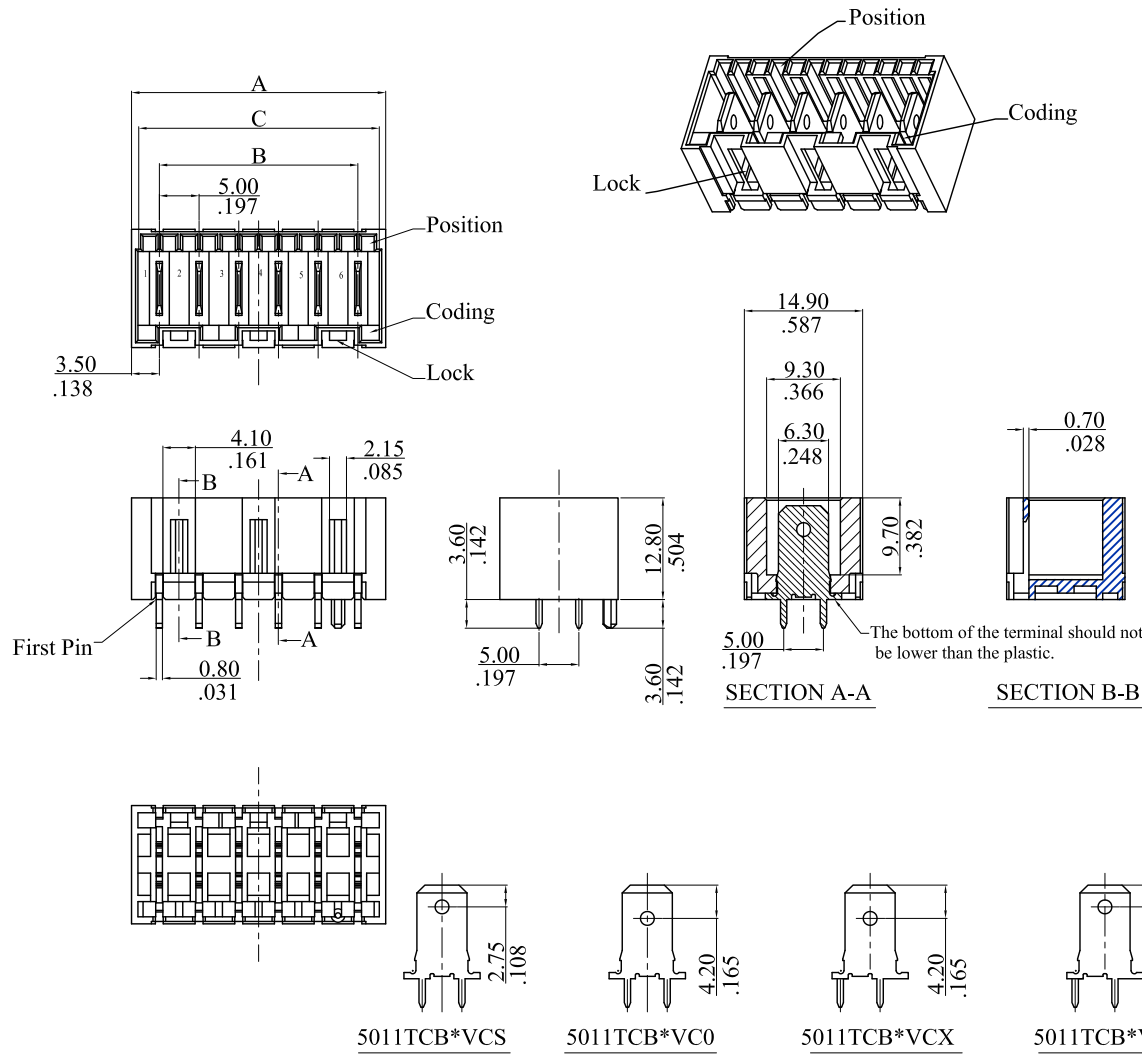


CUSTOMER DRAWING			
REV.	ECO. NO.	DESCRIPTION	DATE
J	ES130618	add KEYchanges	2013.06.20
K	ES130731	add KEYchanges	2013.07.04
L	ES150807	add KEYchanges	2015.08.12
M	ES210302	add KEYchanges	2021.03.09



Note:

- Material: Insulator: See note 2
Terminal: Copper alloy
- Contact Plating:
5011TCBTVC* :
Tin Plated 120 u" over Ni 30 u" min
5011TCBSVC* :
Silver Plated 80~120 u" over Ni 30 u" min
- Compliant IEC 60695-2-11 and IEC 60335-1 (750°C ,Flamme<2S)

Ordering Information:

$$5011P \begin{matrix} ** & V & *** \\ \hline 1 & 2 & 3 & 4 \end{matrix}$$

- No. of circuits
- Material for plastic:
V=Insulator: PA66+30% G/F UL94V-0
- Terminal:
T=Assemble terminal 5011TCBTVC0
S=Assemble terminal 5011TCBTVCXS
X=Assemble terminal 5011TCBTVCX
V=Assemble terminal 5011TCBTVCX
With special layout
M=Assemble terminal 5011TCBTVCM
- See the Table of next page.

Color: Nature

- P=Assemble terminal 5011TCBSVC0
- Q=Assemble terminal 5011TCBSVCS
- Y=Assemble terminal 5011TCBSVCX
- W=Assemble terminal 5011TCBSVCX
- With special layout
- N=Assemble terminal 5011TCBSVCM

12	62.0(2.441)	55.0(2.165)	60.2(2.370)
11	57.0(2.244)	50.0(1.969)	55.2(2.173)
10	52.0(2.047)	45.0(1.712)	50.2(1.975)
9	47.0(1.850)	40.0(1.575)	45.2(1.780)
8	42.0(1.654)	35.0(1.378)	40.2(1.583)
7	37.0(1.457)	30.0(1.181)	35.2(1.386)
6	32.0(1.260)	25.0(.984)	30.2(1.189)
5	27.0(1.063)	20.0(.787)	25.2(.992)
4	22.0(.886)	15.0(.591)	20.2(.795)
3	17.0(.669)	10.0(.394)	15.2(.598)
2	12.0(.472)	5.0(.197)	10.2(.402)
CIRCUITS	DIM.A	DIM.B	DIM.C

TOLERANCE UNLESS OTHERWISE SPECIFIED			LEOCO CORPORATION			
	mm	inch	http://www.leoco.com.tw			
[inch]	mm	inch	APPROVED BY:	DATE:	TITLE:	
1 PLACE	± 0.30	± ---	Topmoon	2021.03.09	Wafer	
2 PLACES	± 0.20	± .012	CHECKED BY:	DATE:		
3 PLACES	± 0.10	± .008	Cedric	2021.03.09		
4 PLACES	± ---	± .004	DRAWN BY:	DATE:	PART NO.:	
			Candice	2021.03.09	5011P**V***	
			SIZE:	SCALE:	DRAWING NO.:	REV.:
			A3	1:1	501102S	M
					SHEET:	
					1 OF 5	

* See from top side

RoHS COMPLIANT

TYPE	0A	0B	0C	0D	0E	0F	0G	0H	0I	0J	0L	0M	0N
KEY/LOCK 2-way													

0P	0Q	0R	0S	0T	0U	0X	0Z	09	10	11	48	80	86

TYPE	0A	0B	0C	0D	0E	0F	0G	0H	0I	0K	0L
KEY/LOCK 3-way											

0M	0N	0Q	0W	01	02	03	05	08	10	11

12	13	1A	2N	2P	31	32	38	39	40	44

53	65	80	81	98

TYPE	0A	0B	0C	0D	0E	0F	0G	0H	0I
KEY/LOCK 4-way									

0J	0K	0L	0M	0W	01	02	03	04

05	06	12	17	19	26	27	37	43

63	65	67	79	80	81	82	84	86

PA	PB

			LEOCO CORPORATION			APPROVED: Topmoon		PART NO.:																								
			GENERAL TOLERANCES: (UNLESS SPECIFIED)			DATE: 2021.03.09		5011P**V***																								
						CHECKED: Cedric						DATE: 2021.03.09		TITLE: Wafer																		
						DRAWN: Candice		DRAWING NO.:																								
						DATE: 2021.03.09						501102S																				
M	ES210302	add KEYchanges	<table border="1" style="margin-left: auto; margin-right: auto;"> <thead> <tr> <th></th> <th>mm</th> <th>inch</th> </tr> </thead> <tbody> <tr> <td>1 PLACE</td> <td>± 0.30</td> <td>± --</td> </tr> <tr> <td>2 PLACES</td> <td>± 0.20</td> <td>± .012</td> </tr> <tr> <td>3 PLACES</td> <td>± 0.10</td> <td>± .008</td> </tr> <tr> <td>4 PLACES</td> <td>± --</td> <td>± .004</td> </tr> </tbody> </table>				mm	inch	1 PLACE	± 0.30	± --					2 PLACES	± 0.20	± .012	3 PLACES	± 0.10	± .008	4 PLACES	± --	± .004			UNITS		SCALE		SIZE	
	mm	inch																														
1 PLACE	± 0.30	± --																														
2 PLACES	± 0.20	± .012																														
3 PLACES	± 0.10	± .008																														
4 PLACES	± --	± .004																														
L	ES150807	add KEYchanges	ANGULAR ± (1°)		mm inch		1:1		A4		2/5		M																			
K	ES130731	add KEYchanges																														
J	ES130618	add KEYchanges																														
REV.	ECO. NO.	DISCRIPTION																														

* See from top side

RoHS COMPLIANT

TYPE	0A	0B	0C	0D	0E	0F	0G	0L
KEY/LOCK 5-way								
	01	02	03	04	05	06	07	08
	09	11	12	13	14	17	18	20
	21	22	23	24	25	26	27	28
	29	30	31	33	34	35	36	40
	43	45	49	50	51	64	69	73
	80	81	82	83	84	85	86	87
	88	PB						

TYPE	0A	0B	0C	0D	0E	0I
KEY/LOCK 6-way						
	04	06	14	15	21	29
	30	50	51	71	73	80
	81					

			LEOCO CORPORATION			APPROVED: Topmoon		PART NO.: 5011P**V***			
			GENERAL TOLERANCES: (UNLESS SPECIFIED)			DATE: 2021.03.09		TITLE: Wafer			
			mm inch			CHECKED: Cedric		DRAWING NO.: 501102S			
			1 PLACE ± 0.30 ± --			DATE: 2021.03.09		UNITS SCALE SIZE SHEET REV. mm 1:1 A4 3/5 M inch			
			2 PLACES ± 0.20 ± .012			DRAWN: Candice					
			3 PLACES ± 0.10 ± .008			DATE: 2021.03.09					
			4 PLACES ± -- ± .004								
			ANGULAR ± (1°)								
M	ES210302	add KEYchanges									
L	ES150807	add KEYchanges									
K	ES130731	add KEYchanges									
J	ES130618	add KEYchanges									
REV.	ECO. NO.	DISCRIPTION									

* See from top side

TYPE	0A	0B	1B	0C	0D	0E	03
KEY/LOCK 7-way							
	04	14	22	23	27	30	31
	32	34	35	38	40	41	42
	43	45	48	51	59	69	76
	80	81	83				

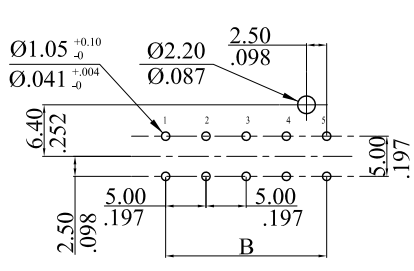
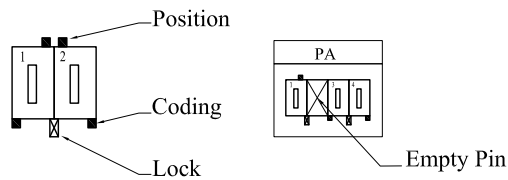
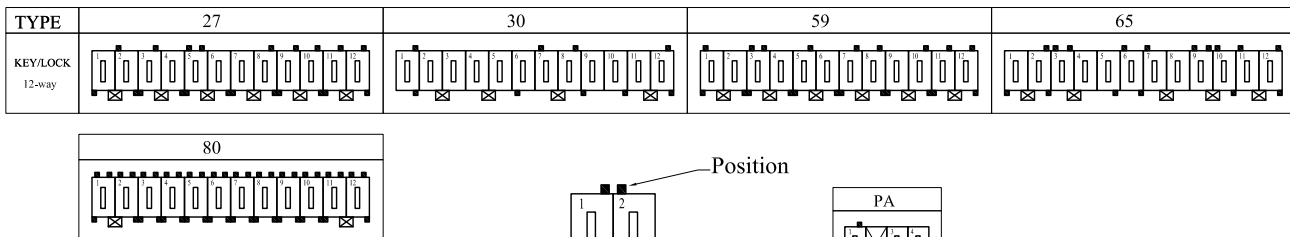
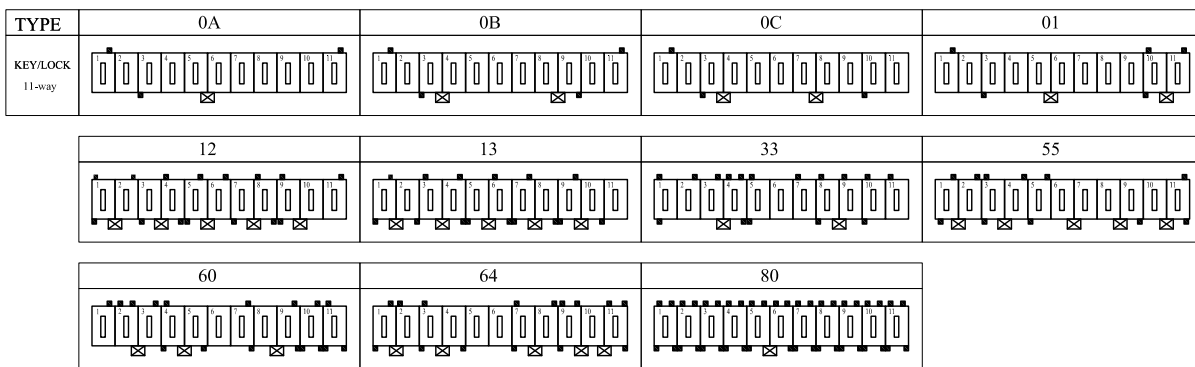
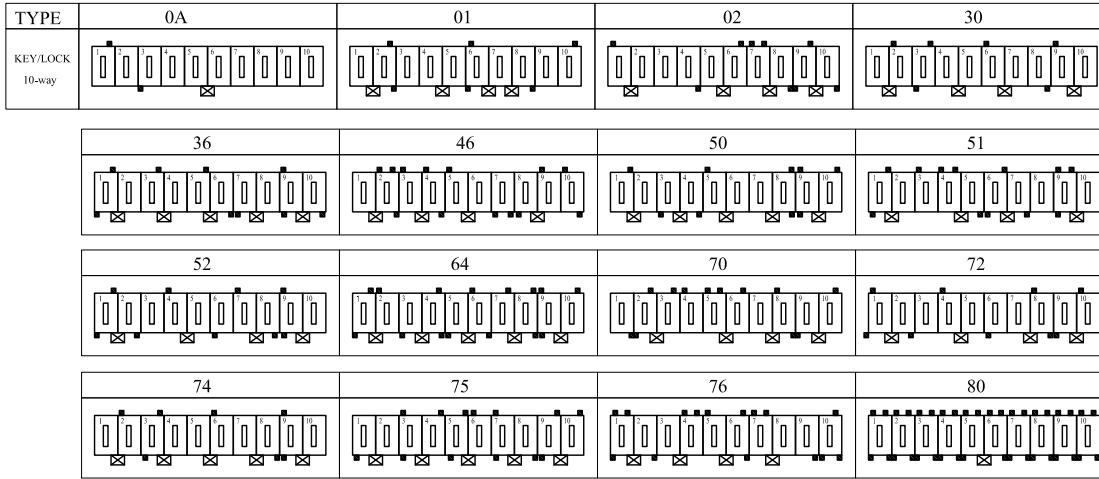
TYPE	0A	0C	0D	0E	0F	08
KEY/LOCK 8-way						
	10	16	21	30	33	41
	44	45	46	48	49	57
	58	62	63	77	80	81
	83					

TYPE	0A	0B	0C	0D	08
KEY/LOCK 9-way					
	31	42	43	48	49
	52	53	57	58	
	80	81			

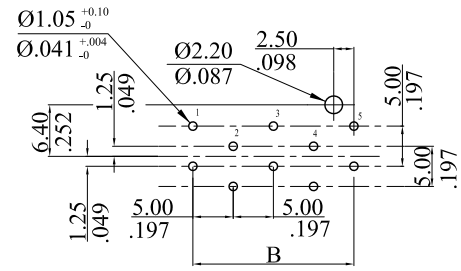
			LEOCO CORPORATION			APPROVED:		PART NO.: 5011P**V***																		
						DATE: 2021.03.09						Topmoon														
			GENERAL TOLERANCES: (UNLESS SPECIFIED)			CHECKED:		TITLE: Wafer																		
						DATE: 2021.03.09						Cedric														
			<table border="1"> <thead> <tr> <th></th> <th>mm</th> <th>inch</th> </tr> </thead> <tbody> <tr> <td>1 PLACE</td> <td>± 0.30</td> <td>± --</td> </tr> <tr> <td>2 PLACES</td> <td>± 0.20</td> <td>± .012</td> </tr> <tr> <td>3 PLACES</td> <td>± 0.10</td> <td>± .008</td> </tr> <tr> <td>4 PLACES</td> <td>± --</td> <td>± .004</td> </tr> </tbody> </table>				mm	inch	1 PLACE	± 0.30	± --	2 PLACES	± 0.20	± .012	3 PLACES	± 0.10	± .008	4 PLACES	± --	± .004	DRAWN:		DRAWING NO.: 501102S			
	mm	inch																								
1 PLACE	± 0.30	± --																								
2 PLACES	± 0.20	± .012																								
3 PLACES	± 0.10	± .008																								
4 PLACES	± --	± .004																								
			DATE: 2021.03.09		Candice																					
M	ES210302	add KEYchanges	ANGULAR ± (1°)					UNITS	SCALE	SIZE	SHEET	REV.														
L	ES150807	add KEYchanges						mm	1:1	A4	4/5	M														
K	ES130731	add KEYchanges																								
J	ES130618	add KEYchanges																								
REV.	ECO. NO.	DISCRIPTION																								

* See from top side

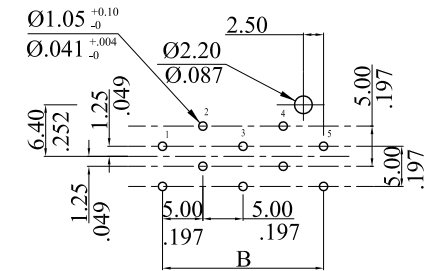
RoHS COMPLIANT



PCB layout for 5011P**VT(S)**



PCB layout for 5011P**VX(M)**



PCB special layout for 5011P**VV(W)**

			leoco LEOCO CORPORATION			APPROVED: Topmoon		PART NO.: 5011P**V***			
			GENERAL TOLERANCES: (UNLESS SPECIFIED)			DATE: 2021.03.09		TITLE: Wafer			
			mm inch			CHECKED: Cedric		DRAWING NO.: 501102S			
			1 PLACE ± 0.30 ± --			DATE: 2021.03.09					
			2 PLACES ± 0.20 ± .012			DRAWN: Candice					
			3 PLACES ± 0.10 ± .008			DATE: 2021.03.09					
			4 PLACES ± -- ± .004					UNITS SCALE SIZE SHEET REV.			
			ANGULAR ± (1°)					mm 1:1 A4 5/5 M			
REV.	ECO. NO.	DISCIPTION									
M	ES210302	add KEYchanges									
L	ES150807	add KEYchanges									
K	ES130731	add KEYchanges									
J	ES130618	add KEYchanges									