

Ordering Information :

7625 - 04 04 * 0
 1 2

RoHS COMPLIANT

1. Plating :

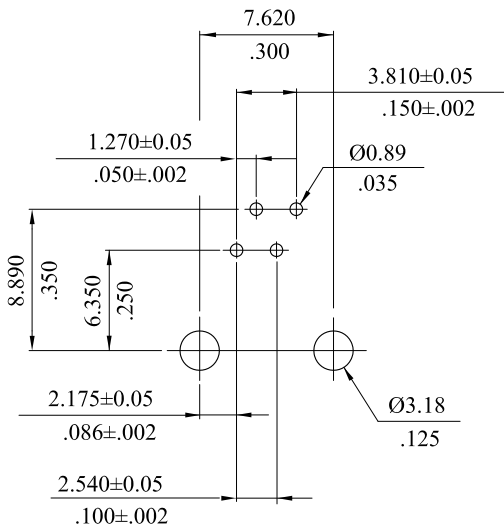
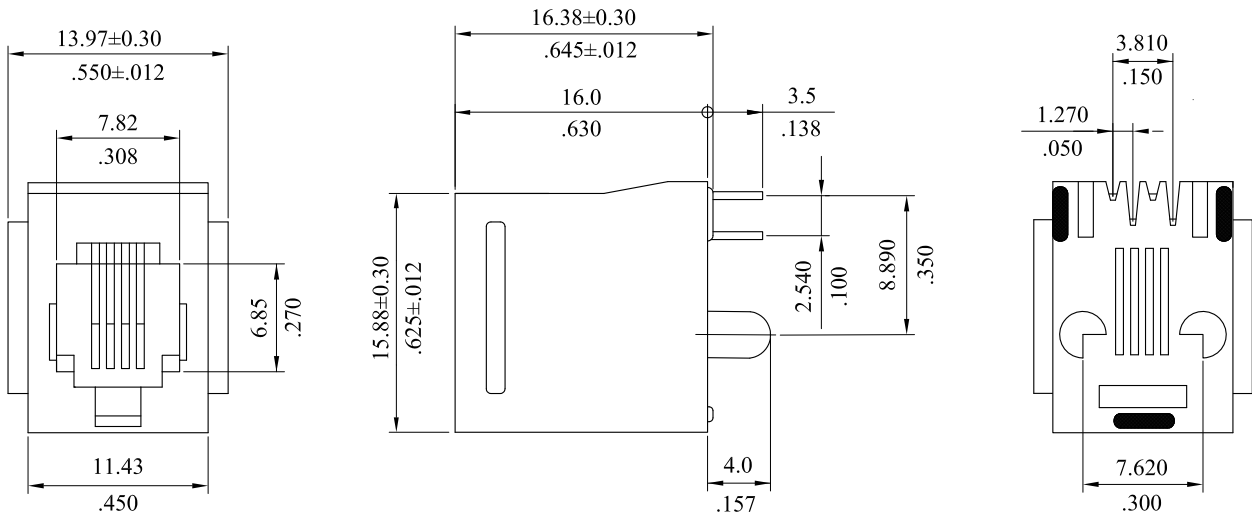
W= 15μ "min. gold over 30μ " min. nickel overall
 Z= 30μ "min. gold over 30μ " min. nickel overall
 G= 50μ "min. gold over 30μ " min. nickel overall

2. Option:

0 = Black, without key, with standoff

Material :

* Insulator : UL 94V-0 PBT
 * Contact : Phosphor Bronze



Recommended Hole Pattern

G	ES101204			LEOCO CORPORATION	APPROVED:	PART NO.:																		
F	ES071028				GENERAL TOLERANCES: (UNLESS SPECIFIED)	DATE:	7625-0404*0																	
E	E980281				CHECKED:	TITLE: PCB Mount Telephone jack																		
D	E970274			<table border="1"> <thead> <tr> <th></th> <th>mm</th> <th>inch</th> </tr> </thead> <tbody> <tr> <td>1 PLACE</td> <td>± 0.30</td> <td>± --</td> </tr> <tr> <td>2 PLACES</td> <td>± 0.20</td> <td>± .012</td> </tr> <tr> <td>3 PLACES</td> <td>± 0.10</td> <td>± .008</td> </tr> <tr> <td>4 PLACES</td> <td>± --</td> <td>± .004</td> </tr> </tbody> </table>		mm	inch	1 PLACE	± 0.30	± --	2 PLACES	± 0.20	± .012	3 PLACES	± 0.10	± .008	4 PLACES	± --	± .004	DATE:	DRAWING NO.:			
	mm	inch																						
1 PLACE	± 0.30	± --																						
2 PLACES	± 0.20	± .012																						
3 PLACES	± 0.10	± .008																						
4 PLACES	± --	± .004																						
A	DWG REL				DRAWN:	762501S																		
REV.	ECO. NO.	CHG.	APP.	ANGULAR ± (1°)	DATE:	<table border="1"> <tr> <td>UNITS</td> <td>SCALE</td> <td>SIZE</td> <td>SHEET</td> <td>REV.</td> </tr> <tr> <td>mm inch</td> <td>2:1</td> <td>A4</td> <td>1/1</td> <td>G</td> </tr> </table>	UNITS	SCALE	SIZE	SHEET	REV.	mm inch	2:1	A4	1/1	G								
UNITS	SCALE	SIZE	SHEET	REV.																				
mm inch	2:1	A4	1/1	G																				