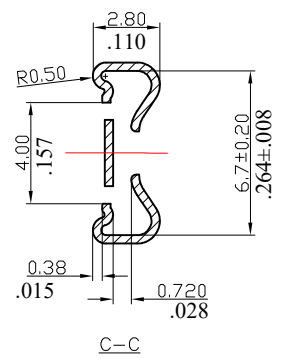
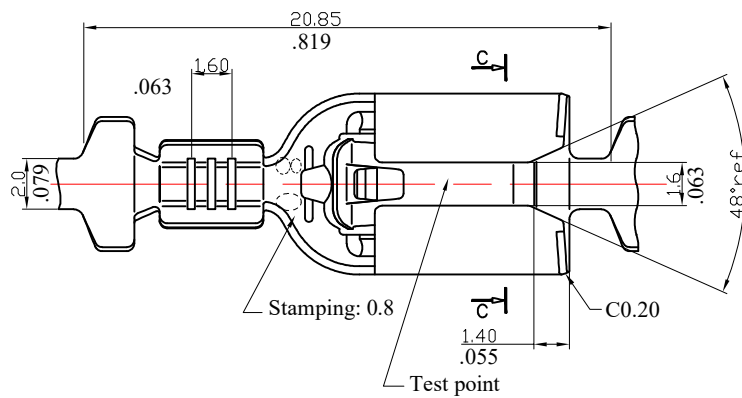
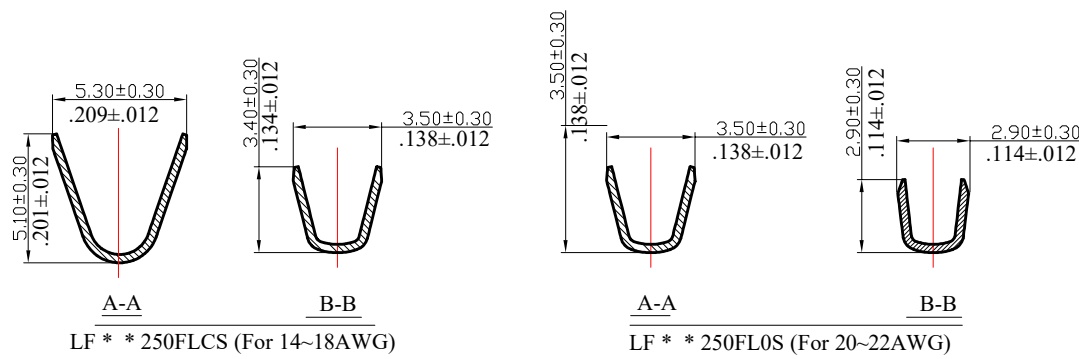
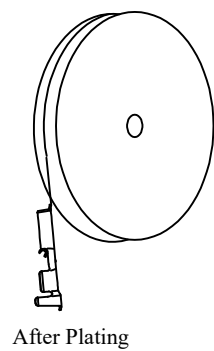
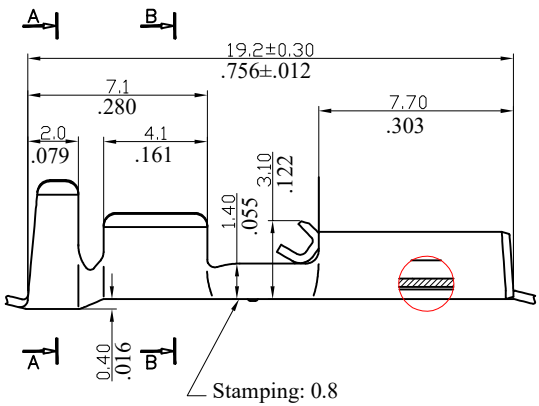


REV.	ECO. NO.	DISCRIPTION	DATE	DRAW BY
E	ES130305	变更电镀后的绕向	2013.03.05	Topmoon
F	ES240103	取消B1、B3区Leoco Logo “  ”	2024.01.05	Merry



Note:

- Material: See the below information.
Thickness: 0.35mm
Finished: Tin-Argon Plating
 - Insertion force ≤ 2.5kg, Withdrawal force ≥ 1.0kgf (with 0.8mm male terminal).
 - Applicable wire: AWG 14 to 22
 - Ordering Information:
LF * * 250FL * S
1 2 3
- Plating:
N=Unplating
T=Tin plated 120u"
 - Material:
C=Phosphor bronze C5191
B=Brass C2680
S=SUS 304-CSP 1/2H (withstand 300°C)
 - See below drawing.



TOLERANCE UNLESS OTHERWISE SPECIFIED			LEOCO CORPORATION http://www.leoco.com.tw		
mm	mm	inch	APPROVED BY:	DATE:	TITLE:
			Corey	2024.01.05	Terminal
1 PLACE	± 0.30	--	CHECKED BY:	DATE:	
2 PLACES	± 0.20	--			
3 PLACES	± 0.10	--	DRAWN BY:	DATE:	PART NO.:
4 PLACES	--	--	Merry	2024.01.05	LF ** 250FL * S
ANGULAR ±1°			SIZE: A3	SCALE: 1:1	DRAWING NO.: LFTC09S
					REV.: F
					SHEET: 1 OF 1